

EN



FRIULI VENEZIA GIULIA: A REGION FOR EVERYONE

ACCESSIBLE TOURISM



FRIULI VENEZIA GIULIA
www.turismo.fvg.it

AN ACCESSIBLE REGION

In 2012 PromoTurismoFVG started to look into the tourist potential of the Friuli Venezia Giulia Region to become “a region for everyone”. Hence the natural collaboration with the Regional Committee for Disabled People and their Families of Friuli Venezia Giulia, an organization recognized by Regional law as representing the interests of people with disabilities on the territory, the technical service of the Council CRIBA FVG (Regional Information Centre on Architectural Barriers) and the Tetra-Paraplegic Association of FVG, in order to offer experiences truly accessible to everyone as they have been checked out and experienced by people with different disabilities.





NATURE, ART, SEA, MOUNTAIN, FOOD AND WINE

The main goal of the project is to identify and overcome not only architectural or sensory barriers but also informative and cultural ones from the sea to the mountains, from the cities to the splendid natural areas, from culture to food and wine, with the aim of making the guests true guests, whatever their needs.

In this brochure, there are some suggestions for tourist experiences and accessible receptive structures in FVG.

Further information and technical details on our website www.turismofvg.it in the section "An Accessible Region"



SEA

- 8. Lignano Sabbiadoro
- 16. Grado
- 24. Trieste

MOUNTAIN

- 38. Winter mountains
- 40. Summer mountains



NATURE

- 70. Nature areas
- 80. Gardens and theme parks
- 86. On horseback or donkey
- 90. Care farms



ART AND CULTURE

- 94. Accessible routes in the art city
- 106. Top museums
- 117. Accessible routes in the most beautiful villages in Italy
- 124. Historical residences



FOOD AND WINE

- 144. A territory to be tasted!
- 147. Route of wine and flavours
- 148. Outdoor Food Project





SEA



LIGNANO SABBIADORO

A seaside resort located halfway between Venice and Trieste, with 8 kilometres of fine golden sand and a calm sea, which has been awarded the blue flag for the protection of the environment for many years. Lignano actually includes three locations:

- Lignano Sabbiadoro, a city of a thousand restaurants, of open-air bars, of long shopping sprees.
- Lignano Pineta, caressed by the shadow of the gardens and outlined by elegant avenues.
- Lignano Riviera, the most relaxing area, immersed in rich vegetation that is reflected in the rustling of the maritime pines.

SERVICES DEDICATED TO PEOPLE WITH DISABILITIES:

- Availability of JOB beach chairs to reach the sea.
- Walkways that give access to the shoreline, the changing rooms, the bathrooms, the showers and even the umbrellas.
- Available and trained staff.



ACTIVITIES AND INFORMATION

SAILING ACTIVITY AND INFORMATION FOR EVERYONE

At the A.S.D. Tiliaventum, which is inside the Marina Punta Faro, there are sailing courses and outings for people with disabilities, who can practice with the “deriva palimpica SKUD18” (paralympic drift boat) (one of the few in Italy), vintage wooden boats and cabin blue-water boats.

A.S.D Tiliaventum
Via Monte Ortigara, 3/M
loc. Punta Faro
33054 Lignano Sabbiadoro (UD)

Tel +39 339 8281513
tiliaventum@gmail.com
www.tiliaventum.com

HOTEL ITALIA PALACE

HOTEL * * * *

Viale Italia, 7
33054 Lignano Sabbiadoro (UD)

Tel +39 0431 71185
Fax +39 0431 70133
info@hotelitaliapalace.it
www.hotelitaliapalace.it

THE FACILITY

There is something that makes a holiday at the Hotel Italia Palace truly special: the magic of staying in an early 20th-century hotel and having the availability of all the state of the art services of this century.

The rooms are light and elegant and guarantee all the necessary comforts for a relaxing stay.

Customer care and the highest level of service are distinctive elements of the Hotel Italia Palace.



ACCESSIBILITY INFORMATION

The main entrance to the facility, from the outdoor pedestrian area, has five steps. The entrance from the car park of the hotel, situated on the basement level can be accessed from an obstacle-free path with no difference in elevation, using a lift (door width 75cm, cabin 85x120cm) to reach the reception and other floors. The bar and breakfast room are on the fourth floor, the restaurant is on the mezzanine floor.

The four accessible bedrooms are large and have bathrooms which give front and side approach to the toilet (with handrails on both sides), front approach to the washbasin and use of the floor-level shower with doors which open almost completely.

There are a wellness area and a gym on the fourth floor, accessible to people with mobility disabilities and accessible bathrooms, and a raised pool accessible by climbing three steps.

There are a conference room and a "cinema" on the mezzanine floor, which can be reached by a two-metre-long ramp with an inclination of about 12%.

HOTEL MIRAMARE

HOTEL * * * *

Via Aquileia, 49
33054 Lignano Sabbiadoro (UD)
loc. Sabbiadoro

Tel +39 0431 71260
Fax +39 0431 720051
info@miramare.com
www.miramare.com

THE FACILITY

Directly on the beach in the centre of Lignano Sabbiadoro, the Hotel Miramare is ideal for a family holiday in the name of hospitality and good service.

Our most important guests are the children to whom we dedicate many services. From the mini-club to bicycles, from the swimming pool to the menu in the restaurant



ACCESSIBILITY INFORMATION

The hotel has a private external car park and an underground garage (parking service by the hotel staff). Access to the facility is accessible through an almost 10-metre ramp with an inclination of 7%.

The common spaces (breakfast room, restaurant, children's play area) can be used by all the guests and are connected by obstacle-free paths. The facility develops over several levels connected by lift (door 75cm wide, cabin 80x120 cm).

The two accessible rooms (one of which communicates with another double room) are large and have bathrooms with level-floor showers and doors which open completely; in one case there is front and side approach to the toilet (with a handrail positioned on the wall beside the toilet) front approach to the washbasin, while in the other one there is space for side approach to the toilet (with a fixed handrail) but not for front approach to the washbasin.

The in-ground outdoor pool can be reached from the pavement of the promenade by climbing two steps (the hotel has a crawler stair-lift to help people on wheelchairs) but is not equipped with a lift or other aids to facilitate people with mobility disabilities to enter the water.

HOTEL PRESIDENT

HOTEL * * * *

Viale della Pittura, 9
33054 Lignano Sabbiadoro (UD)
loc. Riviera

Tel +39 0431 423932
info@hotelpresidentlignano.com
www.hotelpresidentlignano.com

THE FACILITY

The Hotel President is a 4 star, immersed in the greenery of Lignano Riviera. It offers an elegant relaxing environment and is a perfect **place to stay for a holiday centred around sport, relax and sea.**

Equipped with everything necessary for those travelling by bike, it also has an outdoor swimming pool, private beach and restaurant offering international and local cuisine.

A short distance away are the Golf Club and the many night-time attractions of the centre of Lignano Pineta.



ACCESSIBILITY INFORMATION

The hotel has a private outdoor car-park; the entrance to the facility is accessible by a wide ramp with an inclination of about 8%.

The common spaces (breakfast room, restaurant, bar, children's play area) can be used by all the guests and are connected by obstacle-free paths. The facility develops over several levels connected by lift (door 73 cm wide, cabin 125x110 cm).

The accessible bedroom, communicating with another double room, is large and has a bathroom with front approach to the toilet (with a folding handrail to the side of the toilet), front approach to the washbasin and use of the level-floor shower with 105 cm wide door.

There is an in-ground swimming pool in the external area (without a lift or other aid to facilitate people with disabilities to access the water), that can be reached from the paved obstacle-free side path in part asphalt and in part in self-blocking concrete slabs.



Connected to the mainland by a thin strip of land, Grado guards a historical centre of **Venetian grace**, with campielli (squares) and alleys, overlooked by picturesque fishermen's houses.

The "Isola d'oro" (Golden Island) is also embellished by a maze of islets that form its appealing lagoon, which offers a scenery rich in colours, between the green of the lush vegetation and the blue of the Adriatic Sea.

SERVICES DEDICATED TO PEOPLE WITH DISABILITIES:

- Availability of JOB and Sand&Sea beach chairs to reach the sea.
- Wooden and PVC walkways that give access to the shoreline, the changing rooms, the bathrooms, the showers and also the umbrellas.
- Available and trained staff.
- The entrance is free for people with disabilities and accompanying person if they just want to access the beach (passage or walkway).



ACTIVITIES AND INFORMATION

MAIN BEACH GIT

A magnificent golden expanse that stretches for several kilometres to the east, through the whole **Città Giardino** (garden city) until it leaves the village of Grado and joins the beach of "Al Bosco". Paid entrance includes access to the seashore, recreation ground (Parco delle Rose), green areas, playing fields, changing rooms and numerous other services and activities.

GRADO MARINE SPA THALASSOTHERAPY CENTRE

In the area of the GIT Main Beach is the Thalassotherapy Centre of the Marine Spa of Grado. Appreciated in the days of the Austro-Hungarian Empire, it now offers classic and aesthetic treatments, sauna and spa pool. The entrance to the spa complex is by an inclined ramp; The swimming pool is equipped with a mobile lift to facilitate entry into the water.

Grado Marine Spa Thalassotherapy Centre
Viale del Sole, 34073 Grado (GO)

Tel +39 0431 899309
info@gradoit.it - www.gradoit.it



GRAND HOTEL ASTORIA

HOTEL * * * *

Largo S. Grisogono, 3
34073 Grado (GO)

Tel +39 0431 83550
Fax +39 0431 83355
info@hotelastoria.it
www.hotelastoria.it

THE FACILITY

A Belle Epoque style 4-star hotel in Grado. Completely renovated in 1991 it is near the historic centre of the town a **short walk from the sea**. The facility has welcoming light rooms, with every comfort and a charming swimming pool with panoramic views of the sea.

ACCESSIBILITY INFORMATION

The hotel has an underground garage connected to the entrance by a 6m long ramp with an inclination of about 14% (the hotel staff is available to park your car). The entrance to the facility is accessible from the pedestrian



area outside, with a 2cm threshold. The facility develops over several levels connected by lift (door 80 cm wide, cabin 110x140 cm). The bar is on the ground floor, connected to the entrance by obstacle-free paths; the breakfast room is on the mezzanine floor (accessible by a 10 m long ramp with an inclination of about 10%), the restaurant is on the seventh floor. The two accessible bedrooms are large and have bathrooms which give front and side approach to the toilet (with a fixed handrail on one side of the toilet), front approach to the washbasin and use of a level-floor shower with shower curtain.

On the first floor, there is an in-ground swimming pool which can be accessed through a platform stair-lift, with a chair to aid people with disabilities to enter the water. A second swimming pool is on the seventh-floor terrace and can be accessed by climbing a few steps. On the first floor, there is a beauty and rehabilitation spa, accessible to people with mobility disabilities and equipped with accessible toilets, complete with shower. The conference rooms on the first floor are accessible.

The hotel has courtesy aids available for customers on request (two wheelchairs, a mobile lifter in the rehabilitation centre, a JOB chair).

HOTEL FONZARI

HOTEL * * * *

Piazza Biagio Marin, 6
34073 Grado (GO)

Tel +39 0431 876360
info@hotelfonzari.com
www.hotelfonzari.com

THE FACILITY

The 4-star Hotel Fonzari is in the **historical centre of Grado** and on the beach, really comfortable for reaching the beach or doing some shopping. It has classic suites, junior suites and small apartments, all perfect solutions for families with children. Every single living unit consists of a comfortable room with a double bed, and a spacious living room with a double sofa bed; The rooms are equipped with refrigerator and sink, very useful, practical and functional for the needs of the family.

This facility is the ideal place for a dream holiday for everyone and manages to combine an ancient tradition of hospitality and a modern lifestyle.



ACCESSIBILITY INFORMATION

The hotel has a garage located on the first and second floors, with parking stall reserved for people with disabilities, connected with the entrance of the hotel by a lift. The entrance to the facility is accessible from the outdoor pedestrian area with no difference in elevation.

The facility develops over several levels connected by two lifts (80 cm wide door and cabin 110x120 cm). The bar and the breakfast room are on the ground floor, connected to the entrance by obstacle-free paths; the restaurant is on the seventh floor.

The two accessible bedrooms are large and have spacious living rooms, with bathrooms which give only front approach to the toilet (with a fixed handrail on one side of the toilet), front approach to the washbasin and use of the level-floor shower with doors that open almost completely.

There is a meeting room on the ground floor, connected to the entrance by an obstacle-free path, and a swimming pool on the terrace of the seventh floor, which is raised and accessible by three steps.

LAGOON EXCURSIONS

There are many possibilities to have fun and relax that can be experienced in this particular environment, like the many **motorboat excursions**, through the canals and among the little islets and casoni (fisherman's huts).

There are many proposals: nature and historical excursions, by day, or by evening, during live music evenings and delicious fish-based meals, the discovery of this unique environment is truly an experience not to be missed.

The departures are planned from all the beach resorts: Lignano Sabbiadoro, Marano Lagunare and Grado, with motorboats that can host up to 10 wheelchairs at the same

time and some also have toilets equipped for people with disabilities.

One of the main destinations in the Grado lagoon is the **Island of Barbana**: with a short sail (about 30 minutes) along the canals of the eastern lagoon, the island is reached on which the Sanctuary dedicated to the Blessed Virgin stands, a place of devotion and destination of numerous pilgrims.

The motorboats that run the ferry service are accessible to people with disabilities. On the island of Barbana, all the services (bar, restaurant, toilets) are also accessible to people with mobility disabilities.



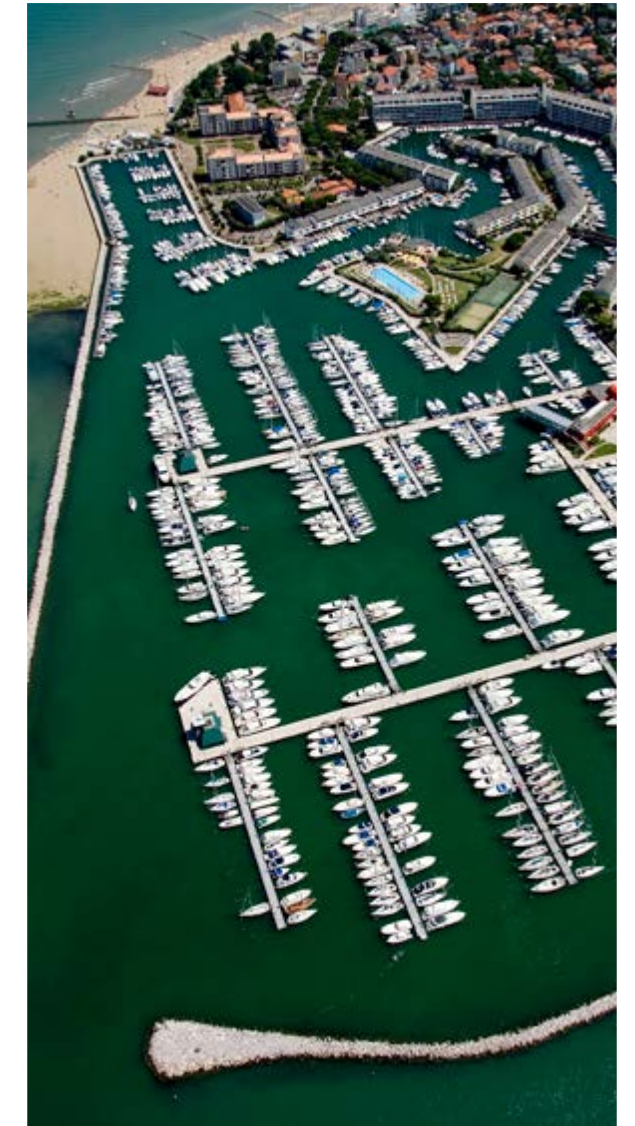
MARINA FVG

Friuli Venezia Giulia provides all boat owners with **23 marinas** and several berths including **22 nautical sports companies**, making it one of the leading regions in Italy for the number of infrastructures and berths. There are many facilities in the 130 km of coastline offering numerous services, moorings equipped also for mega yachts, onshore entertainment and all kinds of comforts..

ACCESSIBILITY INFORMATION

Several marinas guarantee parking spaces reserved for people with disabilities, level obstacle-free paths, accessibility of the main service facilities (information office, toilets, any bars and restaurants...) and, in some cases, berths accessible through piers designed specifically to be used even by those who have mobility difficulties.

The detailed information on the accessibility of some of the marinas can be downloaded from the site: www.turismofvg.it in the "An Accessible Region" section.



TRIESTE

Known as a city rich in art, history and science, Trieste is also a seaside city!

Since 1820 people have bathed in the city centre, in fact, there were many **floating resorts** in The Sacketta or in front of Piazza Unità. From the mid 19th century onwards real resorts started to spring up along the whole coast in Barcola, Grignano, Sistiana and Muggia.

BEACH RESORTS WITH SERVICES DEDICATED TO PEOPLE WITH DISABILITIES:

- Bagno marino La Lanterna - El Pedocìn
- I Topolini
- Beach resort Sirena - Grignano 1
- Ausonia
- Porto San Rocco Marina Resort



BAGNO MARINO LA LANTERNA - EL PEDOCÌN

La Lanterna resort, known also with the name of el pedocìn is made up of two separate and distinct areas: one for women and children up to 12 years of age, the other for men.

For people with disabilities, there are toilets, indoor and outdoor showers, a changing room with a bed equipped with handrails. Open throughout the year for heliotherapy care.

**Bagno marino
La Lanterna - El Pedocìn
Molo Fratelli Bandiera, 3
34123 Trieste (TS)**

Tel +39 040 305 922



BEACH RESORT I TOPOLINI

Created in the 1930s, I Topolini are made up of 10 semi-circular terraces lined up along the Riviera and overlooking the sea.

For people with disabilities, there is an access ramp to the platform below the promenade and one for access to the sea.

There is also a bathroom with a sink and an alarm bell.

**Stabilimento balneare I Topolini
Viale Miramare
34136 Trieste (TS)**

Tel +39 040 41079



BEACH RESORT SIRENA GRIGNANO 1

The people of Trieste call it Grignano 1 to separate it from the later one Grignano 2.

It has two swimming pools where many activities are organized by various associations and summer camps.

Great attention has also been given to the needs of people with disabilities: in fact, a secluded corner has been created where bathing in the sea is made easier with the aid of a controlled chairlift.

**Stabilimento balneare
Sirena - Grignano 1
Riva Massimiliano e Carlotta, 2
34151 Trieste (TS)**

Tel +39 392 944 3567

AUSONIA

The Ausonia is a beach resort of modern conception or even futuristic for its time, equipped with every comfort, swimming pools, diving boards, solariums and restaurants.

For people with mobility disabilities, there is a concrete ramp that can be used with assistance to access an area with 80 cm deep water.

There are also toilets, showers and equipped changing rooms.

Ausonia
Riva Traiana, 1
34123 Trieste (TS)

Tel +39 040 309913 (resort)
Tel +39 334 5085653 (restaurant)
ausonia@cooperativaconfini.it



SAILING FOR PEOPLE WITH DISABILITIES

The Section of the **Naval League of Trieste**, with the Dis-Equality project, has been committed for many years to spreading the love of the sea and the sail-boat, with the activation of theoretical-practical lessons also for people with disabilities who can try their hand at equipped boats, helped by trained instructors, professional and attentive to the different needs of everyone.

Lega Navale di Trieste
Molo Fratelli Bandiera, 9
34123 Trieste (TS)

Tel +39 040 301394
Fax +39 040 301394
trieste@leganavale.it
www.leganavale.it/Trieste

Coordinate: 45° 38' 56'' N
13° 45' 26'' E

SAILING FOR THE BLIND AND VISUALLY IMPAIRED

In the picturesque Baia di Sistiana for many years now the ASD FairPlay, an amateur sports association founded by a group of friends with the wish to promote cognitive and good sports learning, in collaboration with the UICI of Trieste and ANIOMAP, offers sailing courses dedicated to people with visual disabilities. The courses teach the principles of basic techniques and include tutorials on boats and mobile drifts.

ASD FairPlay

Tel +39 348 247 2221 (Tommaso)
Tel +39 347 347 3992 (Druso)
info@asdfairplay.it
www.asdfairplay.it

HOTEL ITALIA

HOTEL * * *

Via della Geppa, 15
34121 Trieste (TS)

Tel +39 040 369900
info@hotel-italia.it
www.hotel-italia.it

THE FACILITY

Hotel Italia is situated in the city centre of Trieste. Housed in a completely renovated 1806 building, it is completely without architectural barriers.

Temporary parking options in the reserved area and several parking/garage solutions (for a fee not far from the hotel).

The hotel is situated in an ideal place to discover the city and the territory, thanks to its closeness to all the strategic points and city transport (historic tram, boats).



ACCESSIBILITY INFORMATION

There is a public parking stall near the entrance to the hotel reserved for people with disabilities. The entrance to the facility is accessible and takes place via a short 70 cm inclined ramp; To reach the front desk there is a 7 m long internal ramp with an inclination of 8%.

The common spaces (breakfast room, restaurant, bar, children's play area) can be used by all the guests and are connected by obstacle-free paths. The structure develops over several levels connected by lift (door 73 cm wide, cabin 85x115 cm). The hotel has six accessible rooms, all very large and equipped with toilets that give front approach to the sink and use of the level-floor shower, which cubicle open on one side; in some rooms, there is front and side approach to the toilet, in others only front approach. The toilet is always equipped with handrail to the side and in some rooms also of washlet.

The hotel has courtesy aids available for customers on request (wheelchairs, walking frame, crutches, comfortable chair).

CAMPING MARE PINETA

HOTEL * * * *

loc. Sistiana, 60d
34019 Duino Aurisina (TS)

Tel +39 040 299264
info@marepineta.com
www.marepineta.com

THE FACILITY

Camping Village Mare Pineta, a 4-star campsite and village, overlooks the Sistiana Bay and the Gulf of Trieste. The camping village offers camping holidays, with large pitches equipped with electricity and water, or in modern mobile homes real holiday homes equipped with kitchen, bedrooms and a private bathroom with shower. Inside the campsite, you will find a pizzeria restaurant with a terrace overlooking the pool, a supermarket and the service and shower blocks that are easily accessible by all guests.

The famous Rilke Trail, which runs along the campsite leads to the Duino Castle, along which there is a second bar of the Camping Village, which overlooks the Gulf.



ACCESSIBILITY INFORMATION

The facility has two mobile houses which are easily accessible, called “Baia 4 all”; cars can be parked in a field opposite the mobile houses.

The entrance has a 7m long ramp with an inclination of about 10% and a 2 cm threshold. The houses have a surface area of about 32 square meters and can host a maximum of 4 people: they have an outdoor terrace, two bedrooms, living area and kitchen accessible by people on wheelchairs (there is a space under the sink) and two bathrooms with side approach to the toilet, equipped with a handrail on the side of the wall, and a front approach to the sink (in one of the two bathrooms there is also front approach to the toilet and level-floor shower).

The paths in the village are mostly asphalt and lead to the common spaces which are all accessible: small supermarket, restaurant, gym and sports fields, in-ground swimming pool without chairlift or any aids for people with disabilities to enter the water. Four bathroom blocks in the common areas of the campsite are equipped with accessible toilets front-side approach to the toilet (equipped with handrails), front-facing approach to the sink and use of the level-floor shower.

PORTO SAN ROCCO MARINA RESORT

HOTEL * * * *

Strada Per Lazzaretto, 2
34015 Muggia (TS)

Tel +39 040 330100
Fax +39 040 9279203
hotel@portosanrocco.it
www.hotelportosanrocco.it

THE FACILITY

Hotel San Rocco is located in the charming residential tourist complex of Porto San Rocco, a short walk from Muggia and a short distance from the Karst and Slovenia. The village has an open-air swimming pool with Jacuzzi, solarium area, conference hall, fitness area, restaurant, shops and yacht club.

ACCESSIBILITY INFORMATION

The hotel has an outdoor parking stall reserved for people with disabilities and a garage, both connected with the entrance of the facility by an obstacle-free path and no elevation differences.



The common spaces (breakfast room, bar) can be used by all the guests and are connected by obstacle-free paths. The facility develops over several levels connected by lift (door 90 cm wide, cabin 110x140 cm).

The four accessible bedrooms are large and have bathrooms which give front and side approach to the toilet (with a folding handrail on one side of the toilet), front approach to the washbasin and use of the level-floor shower.

The restaurant and the in-ground swimming pool without chair lift or other aids to help people with disabilities enter the water are in another facility at about ten metres from the hotel; there is a connecting pedestrian path paved with self-locking concrete slabs, with some elevation differences overcome by ramps with an inclination of about 8%.

On request, the hotel can offer a transport/shuttle service suitable also for people on wheelchairs.



MOUNTAIN





WINTER MOUNTAINS

The mountain of Friuli Venezia Giulia, among the **Friuli Dolomites**, the **Alps** and the **Carnic and Julian Prealps**, offer well-tended and never crowded slopes, with planned snowmaking, modern, fast and safe facilities, in a natural appealing and unspoiled environment.

OUR MAIN SKI AREAS:

- **Piancavallo**: is the “white” most western location of the region
- **Forni di Sopra**: in the enchanted landscape of the Friuli Dolomites
- **Ravascletto-Zoncolan**: in the magical mountain valleys of Carnia
- **Sella Nevea**: to ski between Italy and Slovenia
- **Tarvisio**: in the far north-eastern strip of Friuli Venezia Giulia
- **Sappada**: the charm of the High Dolomites

SKIPASS FVG

At all ski resorts in the region, children up to 8 years old are entitled to a free daily, multi-day and seasonal ski pass. There are also discount rates for the over 65s and people with disabilities.



ACTIVITIES AND INFORMATION

The FVG mountain is, therefore, an ideal place to learn about the different Alpine disciplines guided by the professionalism of the teachers of the Ski Schools that you find in all our resorts. All schools have teachers enrolled in the Regional Ski Masters Register of Friuli Venezia Giulia who have obtained the qualification for teaching people with disabilities.

Among the activities proposed for people with disabilities: downhill skiing, cross-country skiing, snowboarding and telemark lessons.

For information and booking:
Autonomous region of Friuli Venezia Giulia and Association of ski Schools and teachers of Friuli Venezia Giulia

Tel +39 0432 204142
info@amsi.fvg.it
collegio@maestriscifvg.it
www.maestriscifvg.it





SUMMER MOUNTAINS

NATURAL PARK OF THE JULIAN PREALPS

The Regional Nature Park of the Julian Prealps is characterized by a mountain range among which, the Mount Canin massif to the east with the only glacier in the region.

The peculiarity of the area is determined by the contact of three different bio-geographical areas - the Mediterranean, Illyrian and Alpine - which contribute to the extraordinary biodiversity. These areas have become a Park because of their great interest not only from a geological, naturalistic and landscape point of view, but also historic-cultural, as they include peculiar characteristics which are difficult to find elsewhere.

The visitor Centre in Prato di Resia, location of the park, offers the visitor the possibility to get to know the area through the exhibition features that reproduce the natural environments (the river, the undergrowth, the meadows and the mountain).

The Visitor centre is obstacle-free and for blind people, there is the possibility to touch different objects and be supported during the

visit by sound multimedia content (such as animal calls, sounds of nature, daily noise and stories).

Near the Information Centre of Pian dei Ciclamini in Lusevera, there is also the Sentiero per Tutti: (Trail for All) a route that develops over about 600 metres and is equipped with curbs, guide ropes and small slopes that make it suitable even for wheelchairs. There are also educational installations appropriately designed and accessible to the blind which provide information about the area of the Park

Natural Park of the Julian Prealps organization

Piazza del Tiglio, 3 - fraz. Prato
33010 Prato di Resia (UD)

Tel +39 0433 53534
info@parcoprealpigiulie.it
www.parcoprealpigiulie.it

ACTIVITIES AND INFORMATION





SUMMER MOUNTAINS

NATURAL PARK OF THE FRIULI DOLOMITES

The Park is situated on the mountain ranges enclosed between the courses of the Tagliamento and Piave rivers, above the western Friuli plain. The Dolomite peaks, a **UNESCO World Heritage Site**, and beautiful natural scenery make this area a true paradise.

The lack of paved roads and town centres gives the Park a very high degree of wilderness. It's common to meet groups of roe deer, chamois and deer, to see black grouse and wood grouse escaping as you wander by or watch young marmots chase each other.

The "biodiversity" is of great importance (extremely varied flora and fauna species), favoured by the considerable level differences, the particular geographical location and the climate.

The Visitor Centres of the Friuli Dolomites Park are all accessible to people with mobility disabilities. For blind people, there is the possibility to touch different objects and be supported during the visit by sound multimedia content (such as animal calls, sounds of nature, daily noise and stories).

Natural Park of the Friuli Dolomites Organization

Via Roma, 4
33080 Cimolais (PN)

Tel +39 0427 87333
info@parcodolomitifriulane.it
www.parcodolomitifriulane.it



ACTIVITIES AND INFORMATION



- **Visitors Centre di Cimolais (PN)**
exhibition "La fauna del parco"
(the park fauna)
- **Visitors Centre of Erto e Casso (PN)**
exhibitions "Vajont: Immagini e memorie"
(images and memories) and "La catastrofe del Vajont - uno spazio della memoria"
(The catastrophe of Vajont - a remembrance space)
- **Visors Centre of Claut (PN)**
exhibition "Museo Casa Clautana"
(Casa Clautana museum)
- **Visitors Centre of Poffabro (PN)**
exhibition "L'arte casearia e l'alpeggio"

nel territorio del parco" e "In mont: le malghe del Parco" (The art of dairy pastures in the Park territory and the mounts: the shepherd huts of the Park).

- **Visitors Centre of Barcis (PN)**
exhibition "La riserva Naturale Forra del Cellina"
(The Nature Reserve Forra del Cellina).
- **Visitors Centre of Forni di Sopra (UD)**
exhibition "La vegetazione del parco"
(the park vegetation)
- **Visitors Centre of Forni di Sotto (UD)**
exhibition "Le tipologie forestali del parco"
(the park forest types)



TERME DI ARTA

The modern thermal spa in Arta Terme, just a few kilometres from Tolmezzo, offers health packages and various treatments, from water and thermal mud therapies to rehabilitation and physiotherapy. At the base of everything are the beneficial properties of mineral water springing from the Pudia source, known and used since ancient times. There are traditional sauna facilities, bio-sauna, Turkish baths, Kneipp path, thalassotherapy, emotional showers and Scottish showers.

The Arta Thermal spa is accessible to people with mobility disabilities. The swimming pools have chairlifts and handrails on the sides.

Terme di Arta

Via Nazionale 1, 33022 Arta Terme (UD)

Tel +39 0433 929320

Fax +39 0433 929322

info@termediarta.it

www.termediarta.it



GRAND HOTEL GORTANI

HOTEL * * *

Via Umberto I 43
33022 Arta Terme (UD)

Tel +39 0433 928754
Fax +39 0433 929614
info@gortani.it
www.gortani.it

THE FACILITY

The Hotel Gortani is located on the slopes of Mount Zoncolan and is a short walk from the centre of Arta Terme and the historic Pudie Water Spa. It is situated in an area of great interest from a naturalistic and landscape point of view, an ideal destination for all those who love active sports.

The hotel, which is based in a 19th-century building, apart from the finely furnished rooms equipped with every comfort, features a **great restaurant overseen by Chef Manuel**, a large garden and a spa with sauna, steam room and indoor panoramic swimming pool.



ACCESSIBILITY INFORMATION

has an outdoor private area that can be used by people with disabilities to park their car.

The entrance to the facility is accessible and free of elevations; the common spaces (breakfast room, restaurant, swimming pool, spa) are accessible to all guests and are connected via obstacle-free paths. The facility develops over several levels connected by lift (door 79 cm wide, cabin 85x125 cm).

The two accessible bedrooms are large and have bathrooms which give side approach to the toilet (with a fixed handrail on one side of the toilet), front approach to the washbasin and use of the level-floor shower and cubicle which opens completely.

The in-ground swimming pool does not have a chairlift or other aids to help people with mobility disabilities to enter the water.

ALBERGO DIFFUSO BORGO SOANDRI

MULTI-BUILDING HOTEL



Reception:

Via Linussio, 1
33020 Sutrio (UD)

Tel +39 0433 778921
info@albergodiffuso.org
www.albergodiffuso.org

THE FACILITY

Borgo Soandri represents a successful fusion between modern hotel welcome and accommodation in characteristic Carnic houses, in other words, peace and hospitality: peace because this formula provides accommodation in houses with authentic charm; hospitality because they guarantee

all the typical hotel services

Added value is given by the possibility to immerse oneself in village life and to experience it at the pace of its **ancient traditions**.



ACCESSIBILITY INFORMATION

The reception of the Albergo Diffuso is on the ground floor of a building opposite a public car park, a stone-paved path to the entrance (which is accessible in all the internal spaces).

Five apartments are accessible to people with disabilities:

- Colchico 1
- Dafne 1
- Ranuncolo 1
- Silene
- Calendula

ALBERGO DIFFUSO BORGO SOANDRI

MULTI-BUILDING HOTEL



Colchico 1



Possibility of parking in public spaces opposite the houses that have a two cm threshold. It is a studio flat with a bathroom that gives front approach to the toilet (with handrails on both sides of the toilet), front approach to the washbasin and use of the level-floor shower and cubicle which opens completely.

Dafne 1



Possibility of parking in public spaces near the house, with an asphalt and stone path of a few dozen metres that leads to the entrance, with a 2 cm threshold. There is a bedroom, a living/kitchen area and bathroom which gives side and front approach to the toilet (with a fixed handrail on one side of the toilet), front approach to the washbasin and use of the level-floor shower with a cubicle that opens completely.

Ranuncolo 1



Possibility of parking on the road near the entrance to the house, with a short stone path leading to the entrance, with a 1 cm threshold. In the apartment, there is a bedroom, a living/kitchen area and bathroom which gives side and front approach to the toilet (with handrails on either side of the toilet), front approach to the washbasin and use of the level-floor shower obtained in a large niche.

Silene



Possibility of private parking next to the house, in front of the entrance there is a small 4cm threshold. In the apartment, there is a bedroom, a living/kitchen area and bathroom which gives front approach to the toilet (with no handrail), front approach to the washbasin and use of the level-floor shower and shower curtain.

Calendula



Possibility of parking in public parking spaces near the house, with a part asphalt and part cobblestone path that leads to an internal private courtyard of the house, accessible through a driveway gate with no threshold. To reach the apartment there is a 4cm pavement while the entrance is level. There is a bedroom, a living/kitchen area and bathroom which gives side and front approach to the toilet (with a folding handrail on one side of the toilet), front approach to the washbasin and use of the level-floor shower with shower curtain.



ALBERGO DIFFUSO LA MARMOTE

MULTI-BUILDING HOTEL



Reception:
Via Roma, 40
33026 Paluzza (UD)

Tel +39 0433 786068
info@albergodiffusopaluzza.it
www.albergodiffusopaluzza.it

THE FACILITY

The Hotel Diffuso La Marmote, located in Paluzza, offers twenty-two apartments obtained from the renovation of traditional houses and allows its guests to experience a **holiday in the name of nature**, of family welcome and the rediscovery of local traditions.



ACCESSIBILITY INFORMATION

The reception of the hotel Diffuso is in the building that has two steps at the entrance and subsequent 5 m long inclined ramp with a slope of 15% (check-in operations can also be carried out inside the booked apartment).

Three apartments are accessible to people with disabilities:

- Da Rizzi
- Da Cri
- Da Prazec

ALBERGO DIFFUSO LA MARMOTE

MULTI-BUILDING HOTEL



Da Rizzi



A few dozen metres from the entrance there is an external parking area, with a slightly sloping path to reach the apartment. The entrance to the apartment on the ground floor has no threshold or difference in elevation; there are two bedrooms a living/kitchen area and bathroom which gives side and front approach to the toilet (with handrails on either side of the toilet), front approach to the washbasin and use of the level-floor shower with shower curtain.

Da Cri



Near the entrance, there is a private outdoor area used as a parking lot, from which a 10m long incline with a slope of about 15% begins. The entrance to the apartment on the ground floor has a threshold of 2cm; there is a bedroom a living/kitchen area and bathroom which gives side approach to the toilet (with a handrail on either side of the toilet), front approach to the washbasin and use of the level-floor shower with cubicle which can be opened completely.

Da Prazec



Near the entrance, there is a private outdoor area used as a parking lot, with a flat path partly in gravel and partly in washed gravel slabs up to the entrance. The entrance to the apartment on the ground floor has a threshold of 1 cm; there is a bedroom a living/kitchen area and bathroom which gives front and side approach to the toilet (with a handrail on one side of the toilet), front approach to the washbasin and use of the level-floor shower with cubicle which can be opened completely.



ALBERGO DIFFUSO ZONCOLAN

MULTI-BUILDING HOTEL

Reception:
Via Caduti 2 Maggio, 144
33025 Ovaro (UD)

Tel +39 0433 678028
info@albergodiffusozoncolan.it
www.albergodiffusozoncolan.it

THE FACILITY

The diffuso or multi-building Hotel Zoncolan is at the feet of the Mountain of the same name which for quite a few years now has been a **popular destination for cyclists**.

It offers accommodation of various dimensions in traditional perfectly renovated elegantly furnished Carnic houses.

Choosing a holiday at this multi-building hotel means to immerse oneself in the most authentic nature and tradition of this land.



ACCESSIBILITY INFORMATION

The reception of the multi-building hotel is situated in the basement of a building (which is also the tourist information office) with a public car park opposite and it can be reached by a staircase with a platform stair-lift.

The reception has a special off-road wheelchair for clients who want to practice outdoor activities in the mountain environment.

Four apartments are accessible to people with disabilities:

- Stali di Relio
- Corlea di Sot
- Fravins A
- Rasat di Sot

ALBERGO DIFFUSO ZONCOLAN

MULTI-BUILDING HOTEL



Stali di Relio



The house is located at a higher level than the road, but you can leave the car in the courtyard next to the house itself, with a grass path to the entrance which has a 2.5 cm threshold. The house is spread over three floors, connected only by stairs, but on the ground floor, there is a living /kitchen area with double sofa bed and a bathroom that gives side approach to the toilet (with handrails on both sides), front approach to the sink and use of the level-floor shower, with shower curtain.

Corleta di Sot



Possibility of parking in the internal courtyard of the house, with a stone path to the entrance with a 2cm threshold. The apartment has a bedroom, a living room and kitchen and bathroom which gives side approach to the toilet (with a folding handrail on one side of the toilet), front approach to the washbasin and use of the level-floor shower with shower curtain.

Fravins A



Possibility to park on the road near the entrance to the apartment. The main entrance has steps, the accessible entrance is from a side courtyard paved in cobblestone, with a 1 cm threshold. In the apartment, there is a bedroom, a living/kitchen area and bathroom which gives front approach to the toilet (with handrails on either side of the toilet), front approach to the washbasin and use of the level-floor shower with 70 cm cubicle door.

Rasat di Sot



Possibility of parking in the internal courtyard of the house, in front of the entrance with a 2cm threshold. The apartment has a bedroom, a living room and kitchen and bathroom which gives front and side approach to the toilet (with a folding handrail on one side of the toilet), front approach to the washbasin and use of the level-floor shower with shower curtain.

HOTEL IL CERVO

HOTEL * * * *

Via Priesnig, 72
33018 Tarvisio (UD)

Tel/Fax +39 0428 40305
info@hotelilcervo.com
www.hotelilcervo.com

THE FACILITY

A **relaxation corner** between the Julian Alps and the forests of Tarvisiano, a unique natural environment, framed by three borders (Italy, Austria, Slovenia).

The hotel is near the cycle path Alpe Adria Radweg, the Golf course and the ski slopes, and is the perfect place for **families that love nature and sport** in summer and winter.



ACCESSIBILITY INFORMATION

The hotel has an external private parking area with a beaten earth floor. The entrance to the facility has a few steps or a 6m long ramp with an inclination of about 10%; the common spaces (breakfast room, bar, restaurant, meeting room) are available to all the guests and are connected by obstacle-free paths. The facility develops over several levels connected by two lifts (75 cm wide door and cabin 115x135 cm).

The five accessible bedrooms are large and have bathrooms which give front and side approach to the toilet (without handrails), front approach to the washbasin and use of the level-floor shower with shower curtain.

There is a wellness area on the ground floor with a raised swimming pool with six steps and children's play area, with no elevation differences and 70 cm wide door.

HOTEL SPARTIACQUE

HOTEL * * *

Via Valcanale, 12
33018 Tarvisio (UD)
loc. Camporosso

Tel +39 0428 63040
Fax +39 0428 63196
info@hotelspartiacque.com
www.hotelspartiacque.com

THE FACILITY

The Hotel Spartiacque is located in **Camporosso**, a resort not far from Tarvisio, and has been run by the Baron family for 30 years. Furnished in a rustic style typical of the mountain area, it offers a comfortable environment in which to spend a relaxing holiday.

Guests can find the large restaurant room with a stube, a reading room, the TV room, the bar, a large parking lot for buses and cars, the ski depot and a large garden with **children's play area**.



ACCESSIBILITY INFORMATION

The hotel has an external private parking area connected by an asphalt path to the side entrance of the facility, with a 1m long ramp with an inclination of about 9% (the main entrance has three steps).

The common spaces (breakfast room, bar, restaurant) are accessible to all guests and are connected by obstacle-free paths and a 1m long ramp with an inclination of about 11%. The facility develops over several levels connected by lift (door 85 cm wide, cabin 110x140 cm).

The two accessible bedrooms are large and have bathrooms which give front and side approach to the toilet (with a folding handrail on one side of the toilet), front approach to the washbasin (which is the column type) and use of the level-floor shower with cubicle open on one side.

HOTEL 1301 INN

HOTEL * * * *

Via Barcis, 15
33018 Aviano (PN)
loc. Piancavallo

Tel +39 0434 655579
Fax +39 0434 655419
info@1301inn.it
www.1301inn.it

THE FACILITY

In Piancavallo, set in a wonderful scenery at 1301 metres above sea level, the 1301 INN has 37 welcoming, spacious and modernly furnished rooms and also has rooms suitable to welcome families.

The location offers many opportunities both for those who love winter sports and for those who want to experience the mountain in the summer with their families. The activities and proposals are many and the Hotel, given its particular location, is ideal for the whole family to have the best experience in complete tranquillity.



ACCESSIBILITY INFORMATION

The hotel has an outdoor parking area connected by a path reaching the entrance to the facility, which is accessible with a 1 cm threshold.

The common spaces (breakfast room, restaurant, bar,) can be used by all the guests and are connected by obstacle-free paths. The facility develops over several levels connected by lift (door 90 cm wide, cabin 110x140 cm).

The two accessible bedrooms are large and have bathrooms which give a side approach to the toilet (with a folding handrail on one side of the toilet), front approach to the washbasin and use of the level-floor shower with shower curtain.

HOTEL AL POSTA

HOTEL * * *

Via Nazionale, 174
33024 Forni di Sopra (UD)

Tel +39 0433 88423
Fax +39 0433 88593
www.hotelposta.org
info@hotelposta.org

THE FACILITY

The Hotel Posta is located in the enchanting **Friuli Dolomites Nature Park**, where you will be greeted by Francesca, Andrea and Filippo. Located in the centre of the village, it's only a short walk from the gym, tennis courts and communal pool.

The ski lifts can also be reached easily from here. The hotel has mountain-style furnished rooms and most of them with balconies, to enjoy the beautiful view that surrounds it.



ACCESSIBILITY INFORMATION

The hotel has a large external private parking area with two stalls reserved for people with disabilities. The entrance to the facility has a short ramp that overcomes a step; the common spaces (bar, part of the breakfast room and restaurant) are accessible to all guests and are connected by obstacle-free paths.

The facility develops over several levels connected by lift (door 75 cm wide, cabin 80x120 cm).

The two accessible bedrooms are single and have a bathroom that gives side approach to the toilet (without handrails) front approach to the washbasin and use of the level-floor shower with a cubicle that opens completely.



NATURE





NATURAL AREAS



- 1 Protected Marine Area of Miramare
- 2 Nature Reserve of the Val Rosandra - Dolina Glinščice
- 3 Nature Reserve of the Doberdò and Pietrarossa Lakes
- 4 Isonzo River Mouth Nature Reserve
- 5 Nature Reserve of the Valle Cavanata
- 6 Regional Nature Reserve Foci dello Stella
- 7 Nature Reserve of the Valle Canal Novo
- 8 Nature Reserve Lago di Cornino
- 9 Grotta Gigante (Giant Cave)
- 10 Grotta Nuova di Villanova

PROTECTED MARINE AREA OF MIRAMARE

The Protected Marine Area of Miramare, the first established in Italy, extends around the promontory of Miramare, a few kilometres north-west of the city of Trieste. It is situated inside the tourist centre that combines naturalistic and historical-cultural aspects such as the **park and the castle of Miramare**, museum and historical residence of striking beauty.

The Biodiversitario Marino - Immersive Museum of the Protected Marine Area of Miramare, housed in the former stables of the Castle of Miramare, hosts a route dedicated to the marine and coastal biodiversity of the Gulf of Trieste with dioramas, 3D models and some **multi-sensory installations** that allow visitors to listen to the sounds of the marine environment and, in presence of the museum staff, to touch some species of invertebrates inside a tactile pool. The museum develops over two levels, connected by a staircase with a platform stairlift. Inside the museum, there is an accessible bathroom, equipped with handrails.

Biodiversitario Marino
Immersive Museum of the Protected Marine area of Miramare
Via Beirut 2/4
34151 Trieste

Tel +39 040 224147
info@riservamarinamiramare.it
www.riservamarinamiramare.it





NATURAL AREAS

RISERVA NATURELE DELLA VAL ROSANDRA - DOLINA GLINŠČICE

The Reserve contains a valley deeply carved by the **Rosandra-Glinščica** stream, and being an area of contact between the Alpine territory and the sea, it is home to numerous animal species, some central European and others typical of the Mediterranean ecosystem.

The area represents a preferential route for the

Visitors Centre

Bagnoli della Rosandra-Boljunec, 507
34018 San Dorligo della Valle -
Dolina (TS)

Tel +39 329 1286325
info@riservavalrosandra-glinscica.it

descent of the **Bora winds** from inland to the coastal area.

To date, the routes within the Reserve due to the characteristics of the ground and the existing slopes, are difficult for people with mobility disabilities to deal with, even if accompanied.

The Visitors Centre is obstacle-free and has an accessible bathroom, which measures 180x180 cm equipped with handrails.



NATURE RESERVE OF THE DOBERDÒ AND PIETRAROSSA LAKES

The Regional Nature Reserve of the Doberdò and Pietrarossa Lakes is located on the western edge of the Karst plateau and is characterized by two Karst depressions partially **filled with lakes and separated by a ridge**.

The Doberdò Lake is one of the few examples of Karst Lakes in Europe. The level of its waters varies according to the flows of the Vipacco and Isonzo rivers. The **Gradina Visitors Centre** is a Museum in which visitors have the chance to retrace the historical and naturalistic aspects of the Reserve and the Karst.

The entrance and interior spaces of the museum are flat and free of architectural barriers. The presence of multimedia supports and the ability to touch many of the objects on display, allow people with sensory, relational and cognitive disabilities to enjoy the exhibition.

Inside the bar/restaurant next to the Museum there is a bathroom reserved for people with

Gradina Visitors Centre

Via Vallone, 32
34070 Doberdò del Lago (GO)

Tel +39 0481 784111
Tel +39 333 4056800
centrovisitegradina@gmail.com
www.riservanaturalegradina.com

disabilities with which measures 315x220 cm equipped with a folding handrail on the free side next to the toilet.





NATURAL AREAS

ISONZO RIVER MOUTH NATURE RESERVE

Freshwater marshes, but also vast salty wetlands, reeds, woods and grasslands: the Isonzo River Mouth Reserve is the ideal habitat for many animal species and especially for **resident and migratory birds**. Not by chance, it has been recognized as the best birdwatching area in Italy. The pride of the area are the Camargue horses that live free in the Reserve and help to control the development of the grasslands.

The route within the Reserve is accessible to people with mobility disabilities in the stretch between the Visitors Centre and the Marinetta Observatory.

It has mainly natural dirt or grass tracks, with some little bridges consisting of wooden planks with spaces between them even of a few centimetres: help may be necessary to overcome these obstacles.

The Visitors Centre is obstacle-free and



Isola della Cona Visitors Centre
34079 Staranzano (GO)

Tel +39 333 4056800
info@rogos.it
www.riservafoceisonzo.it

has an accessible bathroom, which measures 180x180 cm equipped with handrails.

In the Visitors Centre, there are "tactile tanks" where it is possible to explore molluscs, stones and other objects, and also a huge reproduction plastic model of the natural area including small stuffed animals and birds used for the tactile visits.

ACTIVITIES AND INFORMATION

NATURE RESERVE OF THE VALLE CAVANATA

Located in the most **eastern part of the Grado lagoon**, the Reserve can be reached from the town by car or by scenic accessible bike paths or other means of transport.

This area of international value, used in the past as a fishing valley, is a real birdwatching paradise: numerous species of waterfowl, live among the salt marshes and beaches finding here the optimal conditions to stop and nest.

The routes within the reserve are flat and are mainly dirt ground, fine shallow gravel or grass; there are little bridges consisting of wooden planks with spaces between them even of a few centimetres: help may be necessary to help overcome these obstacles.

The Visitors Centre can be reached by a ramp with an inclination of 8%. Next to the Visitors Centre, there is a bathroom for people with disabilities which measures 180x180cm without handrails.

Visitors Centre
Via Grado, 1
34073 Grado (GO)

Tel +39 0431 88272
Fax +39 0431 88386
info.educazionecavanata@gmail.com
www.vallecavanata.it





NATURE



NATURAL AREAS

REGIONAL NATURE RESERVE FOCI DELLO STELLA

The **Regional Nature Reserve Foci dello Stella** extends in the lagoon of Marano, accessible by special tourist boats (accessible for people with disabilities) through the delta of the River Stella, which upriver takes you to Precenicco and Palazzolo. And at the extreme mouth, there is a view of rare beauty: a village of casoni (fishermen's houses).

NATURE RESERVE OF THE VALLE CANAL NOVO

The reserve comprises a former fishing valley, from which it takes its name, a lagoon area and some arable land. In the Lagoon Visitors Centre built inside the reserve, it is possible to observe birds and animals of the lagoon environment.

The routes within the reserve are flat and are mainly dirt ground, fine gravel or grass; there are little bridges consisting of wooden planks with spaces between them even of a few

**Municipality of Marano Lagoon
Nature Reserves office "Valle Canal
Nuovo" and "Foci dello Stella"**
Via delle Valli, 2
33050 Marano Lagunare (UD)

Tel +39 0431 67551
info@visitmaranolagunare.it
www.visitmaranolagunare.it

centimetres: help may be necessary to overcome these obstacles for people with mobility disabilities.

At the entrance to the building, there is a large accessible bathroom, which measures (250x250 cm) equipped with handrails

ACTIVITIES AND INFORMATION

NATURE RESERVE LAGO DI CORNINO

The Regional Nature Reserve of the Lake of Cornino extends between the municipality of Forgaria in Friuli and Trasaghis in a natural context of indescribable beauty, in which an international project for the conservation of the **griffon vulture** has been developed for almost twenty years.

Through the many observation points, you can admire the many animal species that inhabit the area and, especially the flight of griffon vultures during the morning. In the area next to the Visitors Centre there are some aviaries and a terrarium.

The Visitors Centre can be reached by people with disabilities even by car. The Centre is developed over two levels, connected by an internal staircase or by external inclined ramps; It is partly paved in cobblestones and in self-blocking concrete slabs which can be an obstacle for people with mobility disabilities. Near the entrance to the Visitors Centre, there

Visitors Centre
Via Sompcornino, 81
33030 Forgaria del Friuli (UD)

Tel/Fax +39 0427 808526
centrovisite@riservacornino.it
www.riservacornino.it



is a bathroom reserved for people with disabilities which measures 210x140 cm equipped with a folding handrail on the free side next to the toilet.



NATURAL AREAS

GROTTA GIGANTE (GIANT CAVE)

The Grotta Gigante consists of an enormous cavity which reaches 100 metres of depth and is rich in stalagmites, stalactites and calcite flow. Due to its exceptional size, the Grotta Gigante was listed in the **Guinness Book of World Records** in 1995 as the “tourist cave with the largest cavity in the world”.

Grotta Gigante

Località Borgo Grotta Gigante, 42/A
Sgonico (Trieste)

Tel / Fax +39 040 327312
info@grottagigante.it
www.grottagigante.it

The Visitor Reception Centre has a multimedia room to allow people with disabilities to explore, thanks to an accurate laser-scanned relief made by the National Institute of Oceanography and Experimental Geophysics



GROTTA NUOVA DI VILLANOVA

A natural Cave unique in its morphological peculiarity is the largest contact cavity between two different types of rocks that can be visited in Europe. Its tunnels wind for **8 km** furrowed by an underground stream, of which a part is illuminated and can be easily visited; you can also admire many peculiar stalactites, whose formation and growth seem to defy the laws of gravity.

With the project “Differently speleo” curated by the Villanova Cave Explorers and Workers Group with the collaboration of other local speleology groups, it is possible, to book “special underground excursions”.

The route to visit the caves, due to the characteristics of the ground and the difference in elevation, is not accessible to people with mobility disabilities at the moment.

Grotta Nuova di Villanova
fraz. Villanova delle Grotte, 3
33010 Lusevera (UD)

Tel +39 0432 787915
Tel +39 392 1306550
info@grottedivillanova.it
www.grottedivillanova.it





GARDENS AND THEME PARKS



- 1 Giardino dei Sensi (Garden of Senses)
- 2 San Floriano Rural Park
- 3 Butterfly House in Bordano
- 4 Zoo Park Punta Verde

GIARDINO DEI SENSI (GARDEN OF SENSES)

The garden of the Rittmeyer Institute in Trieste, unique in Italy in size, organization and functions, is an open space of over 6,000 square metres designed to be used in extensive autonomy by the blind and visually impaired. The choice of the materials, the furnishings, the walking surfaces and plant species are designed to guide the person with visual impairment on a route that guarantees high safety and accessibility also to people with mobility disabilities.

The entire area is divided into two spaces: .

- **the front garden:** divided into thematic areas, to enjoy an experience that can involve the senses (the garden of touch, the garden of sounds, the garden of fragrances).
- **the back garden:** where there are currant bushes, strawberry plants, peach and cherry trees, a series of vegetable plots with vegetables, herbs and flowers. There is also a play area for the little ones, a picnic area and an unusual and innovative structure: a maze with moving panels.

Regional Rittmeyer Institute For the Blind

Viale Miramare, 119
34136 Trieste (TS)

Tel +39 040 4198911
info@istitutorittmeyer.it
www.istitutorittmeyer.it





GARDENS AND THEME PARKS

SAN FLORIANO RURAL PARK

The San Floriano Nature Park is located in Polcenigo, one of the most beautiful villages in Italy, in the province of Pordenone. It is a natural oasis with an area of about 65 hectares with **multiple purposes, from education to the production of organic food.**

Over the years, both cultivation and breeding have had an educational and demonstrative purpose, with the main objective of recovering the local fruit and vegetable varieties and breeding smaller or endangered animal species. The highlight of the Park is the tactile route that winds for about 900 metres completely immersed in nature, to be walked strictly barefoot among mud, hay, cork, gravel and many other natural elements.

Within the Park, there are two guest houses/ refreshment points, an educational room and some buildings used as residences or multifunctional area. One guest house has a bathroom reserved for people with disabilities and can be reached by a wide gravel path or by car

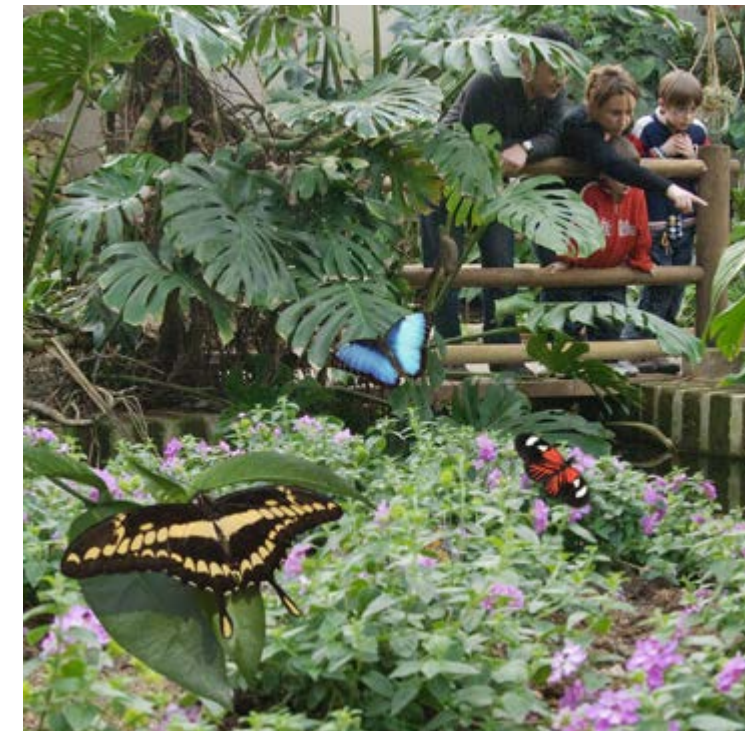
Controvento Cooperativa Sociale
loc. Colle San Floriano, 2
33070 Polcenigo (PN)

Tel 0434 749678
Cell 331 8913299
info@parcosanfloriano.it
www.parcosanfloriano.it



BUTTERFLY HOUSE IN BORDANO

It is a corner of **tropical forest** in Friuli Venezia Giulia. It is the largest exhibition of live butterflies and insects in Italy, with 1.000 square metres of heated greenhouses and as many metres of exhibition space and workshops.



Casa delle Farfalle di Bordano
Via Canada, 5
33010 Bordano (UD)

Tel +39 0432 1636175
Tel +39 344 2345406
info@bordanofarfalle.it
www.bordanofarfalle.it

More than 400 species of butterflies from all over the world are housed in the 3 large garden greenhouses that reproduce their natural habitats, with exotic plants and animals: tropical Africa, Asian rainforests and the Amazon basin.

The tour is free of architectural barriers. Workshops or thematic courses for people with disabilities can also be booked



GARDENS AND THEME PARKS

ZOO PARK PUNTA VERDE

The Zoo Park Punta Verde in Lignano Sabbiadoro is 10 hectares of wonderful nature, respected, defended and protected where 1000 animals of 150 different species, coming from all over the planet, are cared for and pampered.

“Nature is for everybody”: this is the proposal of the Zoo Park Punta Verde dedicated to people with disabilities. It is a sensory laboratory that allows visitors to discover the natural world through the five senses, touching, sniffing, listening and meeting the zoo animals up close.

The Zoo Park Punta Verde is spread over a flat area and therefore has no obstacles for people with mobility difficulties; however, some areas have slopes that can be used with the help of a companion (areas highlighted by map downloadable from the zoo’s website).

Zoo Park Punta Verde
Via G. Scerbanenco, 19/1
33054 Lignano Sabbiadoro (UD)

Tel +39 0431 428775
info@parcozoopuntaverde.it
www.parcozoopuntaverde.it

There are accessible bathrooms, around the park, picnic areas with priority for people with disabilities, and a wheelchair hire service (book by phone or email).





ON HORSEBACK OR DONKEY

- 1 Anche noi a cavallo - We can ride too
Equestrian Riding Therapy Re-education Centre
- 2 Preval Riding centre
- 3 Riu dal Mus



ANCHE NOI A CAVALLO - WE CAN RIDE TOO EQUESTRIAN RIDING THERAPY RE-EDUCATION CENTRE

The Association "Anche noi a cavallo" (we can ride too) founded in 1987 offers many different activities to be carried out with the animals, aimed mainly at people with mobility, intellectual or relational difficulties of all ages. The horses are carefully selected, cared for

Anche noi a cavallo - We can ride too
*Equestrian Riding Therapy
Re-education Centre*
Via Mantova, 22
330780 Porcia (PN)

Tel +39 0434 920867
www.anchenoiacavallo.org



and loved to prepare them to respond correctly to every need.

The environment surrounding the Association is deliberately managed in a way that is welcoming and relaxing, a place to find calm and serenity, far from the busy everyday life of these times.



ON HORSEBACK OR DONKEY

PREVAL RIDING CENTRE

The club is in Mossa, in the province of Gorizia, **immersed in the green of the gentle hills and vineyards**, in the heart of one of the most famous wine-producing areas of Friuli Venezia Giulia: il Collio.

Equestrian rehabilitation activities aimed at people with physical, intellectual and sensory

Circolo Ippico Preval
Amateur Sport Association
Via Blanchis, 4
loc. Preval, 34070 Mossa (GO)

Tel +39 349 5803967
www.centroippicopreval.it

disabilities, both children and adults are taught by an equestrian rehabilitation technician (who has obtained a two-year masters degree in equestrian rehabilitation at the University of Florence) with the support if necessary of a groom to lead the horse.

The available horses are prepared and qualified for this discipline. All the buildings available in the Club are accessible to people with mobility disabilities.



RIU DAL MUS

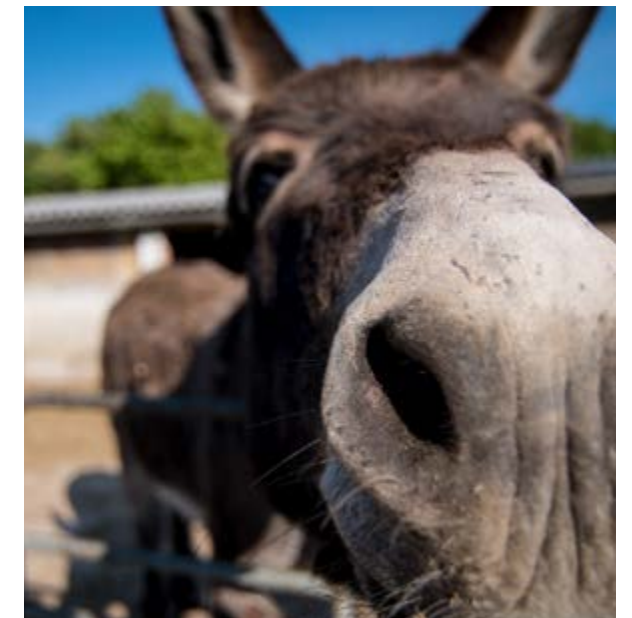
The Farm Riu dal Mus is located on the edge of the residential area of Sutrio, a characteristic town of Carnia, known for its artistic works in wood.

The farm grows medicinal, aromatic and horticultural plants, and native herbs are harvested to be used in gastronomy and local tradition; They also breed cute donkeys always ready with a nice warm welcome.

- **Activities to get closer to nature:** the activities are organized mainly for groups of children and families, aimed at the education of the human-animal relationship to discover and enhance non-verbal communication.
- **Mediation Activities:** in collaboration with the association "Amici di Totò" (friends of Totò) non-profit organization, the farm Riu dal mus organizes a series of mediation activities with donkeys.

Riu dal Mus
Via dei Molini, 38
33020 Sutrio (UD)

Tel +39 347 5085762
info@riudalmus.it
www.riudalmus.it





CARE FARMS

Teaching farms are qualified as care farms when they extend their services to people with some kind of vulnerability or psycho-physical or social disadvantage or to parts of the population that present forms of social distress, through educational and cultural services, support to families and educational institutions.

These farms each with their own peculiarities, are all **oases of happiness** where you can make friends with the farm animals, help in the work and production of the farm (make cheese or bread, harvest the products of the land, etc.) and finally taste the results of the work such as cheeses, juices, jams, cheeses, etc.

As these farms are located in natural contexts, the surrounding roads are often just dirt tracks, or gravel paths or similar materials, which can create some difficulty of movement to people with mobility disabilities

According to regional laws care farms must have accessible bathrooms and educational and social facilities accessible to people with disabilities, including a covered space.



There is something for everyone. Choose the one most suited to you:

• Bosco di Museis	Cercivento (UD)	www.boscodimuseis.it
• Al Casale	Codroipo (UD)	www.alcasale.eu
• Molin Novacco	Aiello del Friuli (UD)	www.molinnovacco.it
• La Pecora Nera	Ovaro (UD)	www.lapecoraneraovaro.com
• Ronco Albina	Cividale del Friuli (UD)	www.roncoalbina.it
• Sot i milucians	Moruzzo (UD)	
• Vasulmus	Colloredo di Monte Albano (UD)	www.asino.fvg.it
• Londero	Gemona del Friuli (UD)	
• Dopo di noi	Talmassons (UD)	
• Il Ponte	Ghirano di Prata (PN)	www.fattoriasocialeilponte.it
• Il Tagliamento	Spilimbergo (PN)	www.isspilimbergo.it/azienda
• Isola Verde	Montenars (UD)	www.altulin.com
• La Contrada dell'oca	Fanna (PN)	
• La Volpe sotto i gelsi	San Vito al Tagliamento (PN)	www.ilpiccoloprincipe.pn.it
• L'Acero Rosso	Sacile (PN)	www.acerorosso.net
• Ortogoloso	Budoia (PN)	www.ortogoloso.it
• Sottosopra	Tramonti di Sotto (PN)	www.sottosoprafvg.it
• Tina	San Giorgio della Richinvelda (PN)	
• Country eden	Monrupino (TS)	



ART AND CULTURE





ART AND CULTURE

ACTIVITIES AND INFORMATION

ACCESSIBLE ROUTES IN THE ART CITY



PromoTurismoFVG offers an audio-guide service all year round in the main art cities of the region. Tour services with a tour guide are also available during the year. Guided tours are free for people with disabilities and the person accompanying them.

The planned tour routes in the various city territories are almost entirely accessible, but in the urban environment, they may present obstacles in some places linked to differences in elevation, slopes or unforeseen events.

For this reason, the presence of an accompanying person is advised to help overcome these situations.

On request, in collaboration with ANIOS - Association of Italian Sign Language Interpreters, there is a **free language mediation service LIS**.

The maps with the accessible routes are downloadable from the website: www.turismoFVG.it in the section "an Accessible Region".





ART AND CULTURE

ACCESSIBLE ROUTES IN THE ART CITY



SPLENDID TRIESTE

Suspended between the Karst and the sea, Trieste is an incredible **mosaic of intertwined stories**: neoclassical art nouveau and eclectic buildings overlooking the sea, the Viennese atmosphere of elegant cafes, the magnificent Piazza Unità d'Italia, a wide-open door on the blue

water and guardian of the passage between the Italian, German and Slavic worlds. Unusual architectural views, churches and places of worship, witnesses of the peaceful multi-religiousness of the city: quotes from the great writers and poets who loved it and immortalized it in their masterpieces.

ACTIVITIES AND INFORMATION

UDINE ROMANTIC AND CHARMING

Reserved and elegant but also happy and convivial is the city that is tinged with the **colours of Gianbattista Tiepolo** (1696-1770) the famous Venetian painter who left works of rare beauty in the city. Piazza Libertà with the beautiful Loggia del Lionello is known as the most beautiful

Venetian square on the mainland. But the heart of this city can also be seen in the streets of the old town full of magnificent buildings, along the rocks, in its lively squares and inns where you can not escape the tradition of "tajut" (a glass of wine).





ART AND CULTURE

ACCESSIBLE ROUTES IN THE ART CITY

DACIA ARENA TOUR

Friuli Venezia Giulia is the region of the Udinese football club that has been playing in the Serie A (Major League) for twenty-five years continuously. The football team of Udine is also the first to have a stadium of its own property: the Dacia Arena, one of the most modern sports grounds in Europe.

Thanks to the agreement with the **Udinese Football club** you can book a truly exclusive visit in advance, to all the places that are generally experienced only by the insiders: the teams changing rooms, the gym where the Udinese players train, the press room where the coach meets the journalists, the mixed zone where the players issue post-match statements to the televisions, the tunnel they walk through to reach the playing field and of course the football field.

ACCESSIBILITY INFORMATION

Outside the stadium, there is a parking area entirely reserved for people with disabilities. The visit takes place inside the structure of the stadium, that is developed over more levels connected by two lifts (door 110cm, cabin 180x200 cm). All the internal spaces are connected by wide obstacle-free routes. In the different areas that can be visited there are three bathrooms accessible to people with mobility disabilities, which give side approach to the toilet with side handrails and front approach to the washbasin.

ACTIVITIES AND INFORMATION



Dacia Arena

Piazzale Repubblica Argentina, 3
33100 Udine

Bookings and ticket purchases

Infopoint PromoTurismoFVG - Udine
Piazza I° Maggio, 7
33100 Udine

Tel +39 0432 295972
info.udine@promoturismo.fvg.it



ART AND CULTURE

ACTIVITIES AND INFORMATION

ACCESSIBLE ROUTES IN THE ART CITY

PORDENONE THE PAINTED CITY

It is an elegant city that charms with its splendidly frescoed building façades that have earned Pordenone the name of *urbs picta*, the **Painted City**.

The Venetian influence is witnessed by the bell tower of the Cathedral of San Marco, inside which you can admire altarpieces and frescoes of the greatest painter of the Friuli Renaissance, Giovanni Antonio De Sacchis, universally known as *il Pordenone*. His masterpieces are preserved in the adjacent Civic Art Museum of Palazzo Ricchieri



SPILIMBERGO MOSAICS

Known as the **City of Mosaics** because of the presence of the Mosaic School in Friuli that represents an excellence of international fame. The school aims to enhance the art of mosaic through study, research, experimentation, the use of new technologies and the meeting with great contemporary artists.

The old town is rich and elegant with its Castle the refined frescoes of the “*Painted Palace*” and the Cathedral, dating back to 1284 in the Romanesque-Gothic style, which houses two canvases by Antonio De Sacchis, *il Pordenone*.



ART AND CULTURE

ACCESSIBLE ROUTES IN THE ART CITY

AQUILEIA

THE TREASURES OF AN ANCIENT ROMAN METROPOLI

Today a **UNESCO World Heritage Site**, it was once a strategic point for trade with the Danube countries and the East, one of the largest cities of the Roman Empire and later a patriarchal seat with a basic role for the

evangelicalism of Eastern Europe. An evocative route among the fundamental testimonies of one of the most important archaeological and early Christian sites in Italy.



ACTIVITIES AND INFORMATION

GORIZIA

BORDER CITY

Its Hapsburg past is still visible in the buildings and gardens, but Gorizia is above all a symbol of the troubled history of the twentieth century in Europe. A border town, it was annexed to Italy only in 1918 and at the end of the Second World War lost part of the suburbs in favour of the then Yugoslavia.

The “**wall of Gorizia**”, today remembered in Piazza Transalpina, was one of the symbols of the separation between Western and Eastern Europe during the years of the Cold War.





ART AND CULTURE

ACCESSIBLE ROUTES IN THE ART CITY

CIVIDALE DEL FRIULI A LONGOBARD ATMOSPHERE

Founded by the Romans as “Forum Juli”, from which the name Friuli derives, it was the capital of the first **Longobard Duchy** in Italy, it saw a succession of Romans and Franks, the Patriarchate of Aquileia and the Serenissima Republic of Venice.

The welcoming squares and cobblestone alleys reveal unique antique treasures such as the refined Longobard Temple the suggestive altar of Ratchis, and the curious **Devil’s Bridge**.



ACTIVITIES AND INFORMATION

PALMANOVA THE PERFECT STAR, THE FORTRESS CITY

A fortress wanted by the Republic of Venice since 1593 for defensive and military purposes, today a **UNESCO World Heritage Site**. From the hexagonal Piazza Grande, the centre of city life, a true parade square, where the Serenissima’s Provveditore (Superintendent) gathered his soldiers for

training, to Porta Cividale, one of the three access gates to the city, from which the three orders of fortifications can be admired composed of bulwarks, courtyards, moat, faussebraye, ravelins and Napoleonic lunettes.





ART AND CULTURE

ACTIVITIES AND INFORMATION

TOP MUSEUMS



- 1 Archaeological Museum of Udine
- 2 National Archaeological Museum of Aquileia
- 3 Mosaic School of Friuli
- 4 Carnic Museum Art and Popular Traditions
- 5 Civic Museum of Natural History in Trieste
- 6 MuCa - The Shipyard Museum of Monfalcone
- 7 Science Centre - Immaginario Scientifico

ARCHAEOLOGICAL MUSEUM OF UDINE

Housed on the ground floor of the east wing of the Castle it was inaugurated with a new set up in 2013. The route is divided into six rooms and exhibits ranging from Magno-Greek vessels, to proto-historic, Roman and high-medieval burial objects from Friuli.

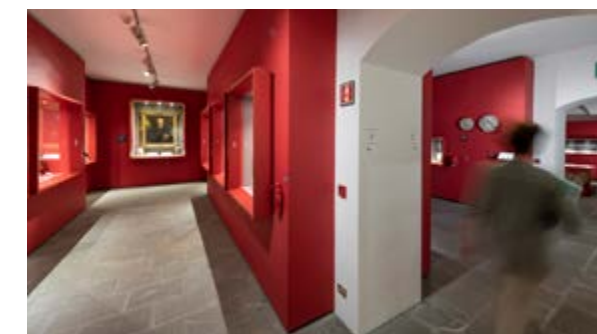
The tour continues on the next floor, with five rooms dedicated to in-depth analysis on various themes of archaeology.

ACCESSIBILITY INFORMATION

The museum facility is accessible to people with mobility disabilities and has a lift. The goal of the archaeological museum of Udine since 2014 has been to pursue equal opportunities in culture in its exhibitions and activities aimed at the public. The museum took part with other 14 partners including Poland, Germany, Austria, Croatia, Slovenia and Italy in the COME-IN! European project. (Cooperation for full accessibility to museums – towards greater inclusion).

Musei del Castello
Piazzale del Castello, 1
33100 Udine

Tel +39 0432 1272591
civici.musei@comune.udine.it
www.civicimuseiudine.it



The Archaeological Museum has a multi-sensory route, with an inclusive app that offers a tour in Italian for the blind, and in general in Italian, English, German and French.



ART AND CULTURE

TOP MUSEUMS

NATIONAL ARCHAEOLOGICAL MUSEUM OF AQUILEIA

The National Archaeological Museum of Aquileia preserves relics dating back to **Roman times**, all coming from excavations carried out on site. Among the most valuable pieces in the collection are a Venus of the Medici type, a Head of an old man of the 1st century B.C. and a rich collection of glass objects, objects in amber, engraved hard stones and the numismatic collection. The adjacent garden houses the lapidary, with architectural material, epigraphs, stele, mosaics, funeral areas.

ACCESSIBILITY INFORMATION

The museum facility is completely accessible to people with mobility disabilities and has a lift. Museum staff are available to carry out guided tours and there are themed routes dedicated to people with sensory and cognitive disabilities. Tactile routes of original finds can also be offered to groups or individual visitors. Some smartphones with special beacon-connected software in the exhibition halls are



National Archaeological Museum of Aquileia

Via Roma, 1
33051 Aquileia (UD)

Tel +39 0431 91035
museoarcheoquileia@beniculturali.it
www.museoarcheologicoaquileia.beniculturali.it

now available for free in the museum's ticket office for all visually impaired or blind visitors. The devices allow the visitor to move autonomously through the museum and listen to audio descriptions in Italian and English of 11 exhibits; the descriptions guide and facilitate the tactile exploration of the original finds, in order to ensure a complete and fulfilling visiting experience.

ACTIVITIES AND INFORMATION

MOSAIC SCHOOL OF FRIULI

Exhibition of mosaic works and sketches made by the Spilimbergo Mosaic School since 1922, the year of its founding. A world-renowned training centre, the mosaic school is the custodian of an artistic tradition that has its origins probably in Roman times, as evidenced by the archaeological mosaic finds still visible in many locations of the region (Aquileia, Cividale del Friuli, Trieste, etc.). The Friuli mosaic school aims to enhance the art of mosaic through study, research, experimentation, the use of new technologies and the encounter with contemporary artists of great talent.

ACCESSIBILITY INFORMATION

The museum facility is free of architectural barriers: it is spread over several levels, connected by a lift with a cabin of 100x230 cm and is equipped with two bathrooms reserved for people with disabilities, which measure about 180x180 cm and are equipped with handrails.

Mosaic School of Friuli

Via Corridoni, 6
33097 Spilimbergo (PN)

Tel +39 0427 2077
www.scuolamosaicistifriuli.it
info@scuolamosaicistifriuli.it





ART AND CULTURE

TOP MUSEUMS

CARNIC MUSEUM ART AND POPULAR TRADITIONS

Housed in the 16th-century Palazzo Campeis, it exhibits a rich collection of ethnographic, artistic and artisan material that involves all aspects of Carnia's life and traditions, in a period from the 14th to the 19th century. The route winds through 30 rooms, which reconstruct the domestic and working environments: the kitchen, the bedrooms, the eating nook, the workshops of the copper and brassware artisans, the weaver, the carpenter.

ACCESSIBLE MUSEUM PROJECT

At the museum ticket office, there are cards and charts with explanations of symbols and images, in **easy to read and understand Language**.

Easy to read and understand language makes the information accessible to people with intellectual disabilities and everybody else. The easy to read and understand information is created with the help of people with disabilities, and in Italy, the Anffas is the only

Carnic Museum of Popular Arts
"Michele Gortani"
Via della Vittoria, 2
33028 Tolmezzo (UD)

Tel +39 0433 43233
www.carniamusei.org
www.museocarnico.it
info@museocarnico.it



association that controls, verifies and gives the approval of easy to read and understand language.



CIVIC MUSEUM OF NATURAL HISTORY IN TRIESTE

Founded in 1846 it exhibits botany, zoology, mineral, geology and palaeontology in huge collections divided into two big sections: one open to the public and the other destined to researchers and specialists. Among the most interesting rare finds are some dinosaur remains found near Trieste, among which the most important and unique in Europe, the fossil of "Antonio" a hadrosaur of about 4 metres practically complete and preserved in anatomical connection.

ACCESSIBLE MUSEUM PROJECT

Along the entire itinerary of the museum, there are information cards and charts made of symbols and images, in easy to read and understand language. The easy to read and understand language and the Augmentative Alternative Communication, make the information accessible to people with intellectual disabilities and everybody else. This information is created with the help of

Civic Museum of Natural History
of Trieste
Via dei Tominz 4
34100 Trieste (TS)

Tel +39 040 6758658
sportellonatura@comune.trieste.it
www.triestecultura.it

people with disabilities and in Italy, the Anffas is the only association that controls, verifies and releases the seal of easy to read and understand language. It is possible to book a "special visit" completely guided by a group of people from the Social Integration Cooperative Trieste under the ANFASS Onlus name Integrazione a marchio ANFFAS Onlus.



ART AND CULTURE

TOP MUSEUMS

MUCA - THE SHIPYARD MUSEUM OF MONFALCONE

The MuCa is situated on the ground floor of the former worker's Hotel of the Village of Panzano the "company town" which sprung up in the 1920s around the shipyard thanks to the first owners, the Cosulich family.

The Museum tells the history of the shipyard and the city through an exhibition route divided into sections: over a century of history illustrated using a contemporary language and using the latest multimedia technologies.

Located next to the shipyards where the world's most beautiful cruise ships are still built, set in the fascinating context of the "garden city" of Panzano, the Museum offers a fascinating experience in a productive and active industrial reality.

ACCESSIBLE MUSEUM PROJECT

The museum has private parking with a stall reserved for people with disabilities; access to the facility is by staircase or 6m long ramp with a slope of about 10%. The interior

**MuCa - Shipyard Museum
of Monfalcone**
Via del Mercato 3
Panzano 34074 Monfalcone

Tel. +39 0481 494901
info@mucamonfalcone.it
www.mucamonfalcone.it

is spread over staggered levels connected by ramps, except for two rooms that can be reached by platform stairlift.

There is a bathroom with side approach to the toilet and front approach to the washbasin. Museum staff is available to carry out guided tours and themed routes dedicated to people with disabilities.

ACTIVITIES AND INFORMATION





ART AND CULTURE

TOP MUSEUMS

SCIENCE CENTRE - IMMAGINARIO SCIENTIFICO

In a carefully calibrated blend of tradition and innovation, the museum network of the Imaginario Scientifico, in all its three locations of Friuli Venezia Giulia, offers interactive routes, multivisions, fascinating visits, courses, workshops and special events. Science becomes fun, in a new generation museum based on direct experimentation, where “not touching is prohibited”.

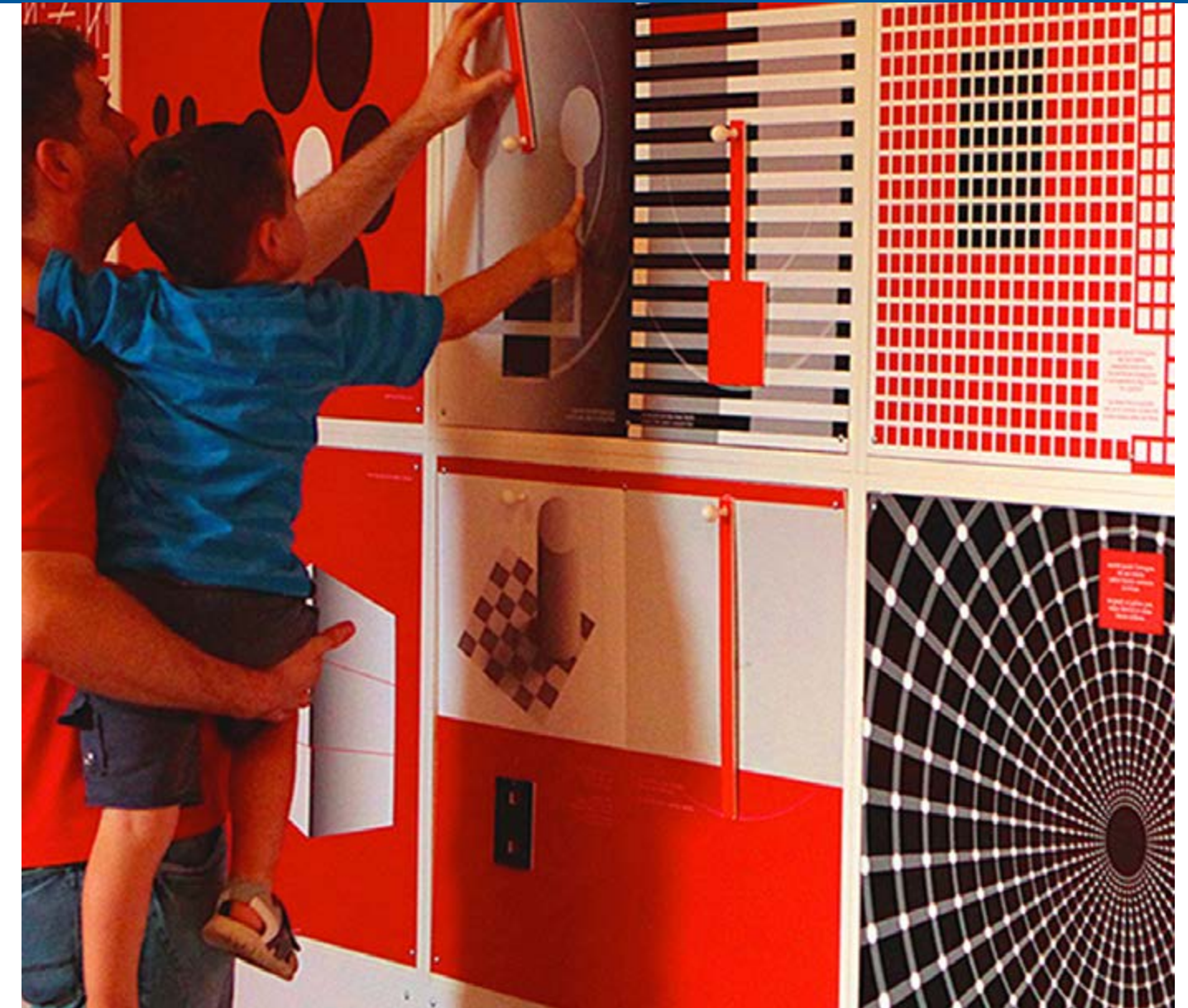
ACCESSIBILITY INFORMATION

Thanks to the absence of architectural barriers, the centres of the Immaginario Scientifico propose, with the ImmaginAble project, museum tours and workshops aimed at groups of people with disabilities, customized and based on the potential and abilities of the participants.

Science Centre -
Immaginario Scientifico
Riva Massimiliano e Carlotta 15
34151 Grignano, Trieste (TS)

Tel +39 040 224424
info@immaginarioscientifico.it
www.immaginarioscientifico.it

ACTIVITIES AND INFORMATION





ART AND CULTURE

ACTIVITIES AND INFORMATION

ACCESSIBLE ROUTES IN THE MOST BEAUTIFUL VILLAGES IN ITALY



- | | |
|---------------------|---------------------|
| 1 Clauiano | 8 Toppo di Travesio |
| 2 Cordovado | 9 Valvasone |
| 3 Fagagna | 10 Venzone |
| 4 Gradisca d'Isonzo | |
| 5 Poffabro | |
| 6 Polcenigo | |
| 7 Sesto al Reghena | |

In Friuli Venezia Giulia there are 10 locations included in one of the national circuits dedicated to the most characteristic and best-preserved villages. Visiting them you can travel through the whole region, capture their essence and perceive the diversity that characterizes each individual area.

Friuli Venezia Giulia surprises, in fact, because of the changing nature of its landscape and its traditions: you will discover a small universe made of secret castles, routes along the waterways and the ancient mills, historical re-enactments and never forgotten crafts.





ART AND CULTURE

ACCESSIBLE ROUTES IN THE MOST BEAUTIFUL VILLAGES IN ITALY

CLAUIANO

of **Roman origin**, destroyed and rebuilt as the village of “pieris e claps”, stones and rocks. The buildings spread around the church of San Giorgio to the south and San Martino to the north. Between the 17th and 18th centuries, the two centres from the north and south widened their borders until they became one. The precious 18th-century noble residence Villa Manin Guerresco can be found in the village.



CORDOVADO

A small gem of western Friuli rich in history and precious monuments enhanced by a splendid castle located inside the medieval village, the antique Marian sanctuary jewel of baroque art, an ancient church dating back to the 15th century, but also enriched by natural environments that harmoniously fit into a fascinating and primordial route. Land of poetic inspiration for great writers such as Ippolito Nievo and Pier Paolo Pasolini.



ACTIVITIES AND INFORMATION

FAGAGNA

It is located on a hill northwest of Udine, in a location from which beautiful views open onto the surrounding hills and the plain. The castle today little more than a ruin rises on a site which has been inhabited since the Roman era. of the ancient fortifications, only a small part still survives including fragments of the walls, the gate of Borgo, the castle tower with the clock (transformed into a bell tower), the ruins of the master tower, a 13th-century cottage and the church of San Michele Arcangelo.



GRADISCA D'ISONZO

A Middle-European style social gathering spot, surrounded by greenery. A noble city that, especially since the 16th century, played a key role in the defensive system set up by the Republic of Venice against Turkish invasions. Venice strengthened the city enormously and between the 17th and 18th centuries, it was transformed from a city into the Princely Countship of Gradisca.





ART AND CULTURE

ACCESSIBLE ROUTES IN THE MOST BEAUTIFUL VILLAGES IN ITALY

SESTO AL REGHENA

of pre-Roman origin, it developed mainly thanks to the foundation of the **Benedictine Abbey** in the first half of the 8th century and the Longobard domination of 762, which was followed by numerous others. In 899 it suffered a devastating Hungarian invasion and was rebuilt and fortified starting from 960 taking on the look of a medieval fortified castle with a defensive system of towers and moats.

POLCENIGO

Located in an area of great interest from a nature and landscape point of view **between the springs of the Gorgazzo**, crystal clear waters that spring from a karst cavity which is fascinating for the play of light that filters from the rocks and the wide and scenic springs of the River Livenza that, although emerging a few dozen metres above sea level, give rise to a waterway of considerable scope, Polcenigo is full of historical, artistic elements, some of which exceptional. The Museum of the Art of Cooking is located here, in memory of the generations of chefs who emigrated all over the world.



ACTIVITIES AND INFORMATION

POFFABRO

An open-air museum in the heart of Val Colvera. Its “magic force” lies in the enchanting effect of the raw edge stones and wooden balconies, blunt and austere elements, which also give a sense of intimacy and reflection in the enclosed courtyards, or the long rows of residences of 16th and 17th -century plan. The beauty of the village lies precisely in the humble reality of pillars, stairs, ballads and stone arches, in perfect harmony with the surrounding nature.



TOPPO DI TRAVESIO

The village, in the municipality of Travesio, preserves the remains of the medieval castle that dominated the plain and the village below. In 1220 eight masi (family-run rural homes) made up the village of Toppo. In the 16th century, there were twenty-five documented masi. From Palazzo Toppo Wasserman, originally a maso that developed in the 16th century into a stately country house, the route to discover the original buildings of the village begins.





ART AND CULTURE

ACCESSIBLE ROUTES IN THE MOST BEAUTIFUL VILLAGES IN ITALY

VALVASONE

The village keeps its medieval appearance intact consisting of pretty alleys and ancient houses with portico. The impressive castle, overlooking the square of the same name, houses late Gothic and Renaissance frescoes and a precious wooden 18th-century theatre.

The Cathedral of the Ss.mo Corpo di

Cristo, which owes its title to the relic of the miracle of the Sacred Tovaglia preserved in it, houses a monumental organ, the only example in Italy of Venetian organ art of the 16th century, embellished by the wonderful artistic frame of il Pordenone and Pomponio Amalteo.



ACTIVITIES AND INFORMATION

VENZONE

Classified **Borgo dei Borghi 2017** or as “the most beautiful village” it is the best-preserved fortified village in Friuli Venezia Giulia, an extraordinary example of architectonic and artistic restoration after the earthquake of 1976.

Rebuilt stone by stone today it preserves the large walls surrounded by a moat, the three entrance gates, the Cathedral of Sant’ Andrea Apostolo, significant example of Gothic style as well as the Town Hall, which, on the back wall, features 16th-century frescoes of the Renaissance painter Pomponio Amalteo.





ART AND CULTURE

ACTIVITIES AND INFORMATION

HISTORICAL RESIDENCES



- 1 Villa Elodia
- 2 Villa Manin Guerresco
- 3 Villa Iachia
- 4 Villa Attems Cernozza de Postcastro
- 5 Villa Cigolotti
- 6 Castello di Villalta
- 7 Castello di Susans - Majano
- 8 Castello di Valvasone

The historical residences of Friuli Venezia Giulia are all perfectly preserved or renovated respecting the original aesthetics. Crossing the threshold of an old 13th-century gate or passing near a crenellated tower, you can imagine the events that animated those ancient stones today enhanced also thanks to the commitment

of the **Association of Italian Historic Residences**.

Many residences open their doors to guided tours and exclusive events. Some are accessible to people with disabilities both in the areas dedicated to events and hospitality, as well as for guided tours





ART AND CULTURE

ACTIVITIES AND INFORMATION

HISTORICAL RESIDENCES

VILLA ELODIA

It is an **18th-century Venetian villa**.

In the centre of the main hall is a refined marble statue, from the workshop of Canova and all the rooms are embellished with frescoes, stucco and decorations inspired by the neoclassical style, from Murano glass chandeliers and the valuable Venetian terrace floor.

ACCESSIBILITY INFORMATION

The areas dedicated to events are accessible. There is a bathroom reserved for people with disabilities which measures 250x150 cm equipped with a folding handrail on the free side next to the toilet.

Villa Elodia
Via Roma, 74
33050 Trivignano Udinese (UD)

Tel 39 338 7578606
info@villaelodia.it
www.villaelodia.it



VILLA MANIN GUERRESCO

It is a Venetian villa dating back to the late 17th century, built by the noble family of the Manin Counts as a holiday home on the farm in Clauiano, one of the "Most beautiful villages in Italy".

The building resembles that of a Venetian palace, with refined and cultured taste, well preserved fascinating frescoes with furnishings of elegant and valuable style. Large rustic "foledor" (barn) with exposed stones and rocks with an atmosphere of the past.

ACCESSIBILITY INFORMATION

The areas dedicated to events are accessible. There is a bathroom reserved for people with disabilities which measures 270x200 cm with handrails.

Villa Manin Guerresco
Via della Filanda, 54
3050 Clauiano (UD)

Tel +39 0432 999453
www.villamaninguerresco.com
info@villamaninguerresco.com





ART AND CULTURE

ACTIVITIES AND INFORMATION

HISTORICAL RESIDENCES

VILLA IACHIA

Villa Iachia is a historical residence of the 18th century situated a few kilometres from Aquileia. The villa was originally composed of two separate units, which were merged following a marriage that saw the union between the Morpurgo family and the Iachia family.

The complex, with its Manor house and rustic outbuildings, is included in the large park, crossed by a 300-metre-long driveway, which with its fourteen hectares, is the largest private park in Friuli.

ACCESSIBILITY INFORMATION

The areas dedicated to events are accessible. There is a bathroom reserved for people with disabilities which measures 260x150 cm equipped with a folding handrail on the free side next to the toilet.

Villa Iachia
Via Aquileia, 2
33050 Ruda (UD)

Tel +39 0431 99250
Cell +39 339 2006646
info@villaiachia.it
www.villaiachia.it



VILLA ATTEMS CERNOZZA DE POSTCASTRO

Located in Lucinico, in the hills of Gorizia and whose existence has been recorded since the mid-17th century. The park that surrounds the property boasts the presence of many varieties of plants that make it a true late 19th-century garden.

In the park, there is also a fountain designed by Nicolò Pacassi in 1760, architect at the court of Maria Theresa of Austria.

ACCESSIBILITY INFORMATION

The areas dedicated to events are accessible. There is a bathroom reserved for people with disabilities which measures 180x180 cm equipped with a folding handrail on the free side next to the toilet.

Villa Attems Cernozza de Postcastro
Via Giulio Cesare, 36
34170 Lucinico (GO)

Tel +39 0481 390206
Tel +39 3475453274
www.villaattems.it
info@villaattems.it





ART AND CULTURE

HISTORICAL RESIDENCES

VILLA CIGILOTTI

It is a beautiful example of 18th-century noble country residence. The first stone was placed in 1740, commissioned by the Conti Cigolotti family, dealing in the timber supply sector on the Western Friuli territory on behalf of the Venetian Republic.

The building consists of three facilities: the Villa (noble residence), the Barchessa (the ancient stables and barn) and the secular Park.

ACCESSIBILITY INFORMATION

The areas dedicated to events and the restaurant are accessible. The different levels of the villa are connected by lift with a cabin of 95x155 cm. There is a bathroom reserved for people with disabilities which measures 160x230 cm with handrails.

The residence also has two accessible bedrooms for its guests.

Villa Cigolotti
Via San Marco, 4
loc. Basaldella, 33099 Vivaro (PN)

Tel +39 0427 976083
Tel +39 339 2671947
info@villacigolotti.it
www.villacigolotti.it



ACTIVITIES AND INFORMATION

CASTELLO DI VILLALTA

It is the most important Medieval Manor house in Friuli. Located in a dominant position on the plain, its history is lost in the night of time, as attested by the Roman foundations and traces of battlements. Several times besieged, destroyed and re-built between 1200 and 1400, it finally underwent a major expansion in 1500 that gave it the monumental aspect that still characterizes it today.

The double-walled enclosure, the walkways, the drawbridge, the defence towers and the picturesque and romantic interior courtyards are witnesses to the past grandeur and strategic importance of the castle.

ACCESSIBILITY INFORMATION

The areas dedicated to events and the restaurant are accessible. The different levels of the castle are connected by lift with a cabin of 95x130 cm. There is a bathroom reserved for people with disabilities which measures 200x230 cm with handrails. The residence also has two accessible bedrooms for its guests.

Castello di Villalta
Via Castello, 27
33034 Villalta di Fagagna (UD)

Tel +39 0432 800171
castellodivillalta@libero.it
www.castellodivillalta.it





ART AND CULTURE

ACTIVITIES AND INFORMATION

HISTORICAL RESIDENCES

CASTELLO DI SUSANS

It is an elegant 17th-century mansion built on the ruins of previous medieval buildings and older settlements dating back to Roman times. It has the appearance of a Medicean Villa and is surrounded by a large and manicured Italian garden.

Located at the top of the Colle di Susans, the castle has great views over the plains and surrounding hills to the mountains and valley of the Tagliamento River.

ACCESSIBILITY INFORMATION

The areas dedicated to events and guided tours are accessible. To access the garden behind the castle there are two steps of about 20 cm each. The different levels of the castle are connected by lift with cabin measuring 105x115 cm. There is a bathroom reserved for people with disabilities which measures 260x170 cm with handrails.

Castello di Susans
33030 Susans di Majano (UD)

Tel +39 0432 948090
Tel +39 335 7012198
info@castellodisusans.com
www.castellodisusans.com



CASTELLO DI VALVASONE

It is the nucleus of the village of the same name listed among the “most beautiful villages in Italy” Built in the 12th century on late ancient pre-existing buildings, damaged and renovated several times, today it has the look of a Renaissance palace.

Over the centuries it has hosted several important figures such as Pope Gregory XII in 1409, Pope Pius VI in 1782 and Napoleon Bonaparte in March 1797.

Thanks to the recent restorations you can admire a precious 18th-century theatre surrounded by a splendid older frieze, dating back to the late 16th century.

ACCESSIBILITY INFORMATION

The areas dedicated to events and guided tours are accessible the different levels of the castle are connected by lift with a cabin of 85x130 cm (door 75 cm wide). There are bathrooms dedicated to people with disabilities, with handrails.

Castello di Valvasone
Piazza Castello 1
33098 Valvasone Arzene (PN)

Tel +39 0434 898898
Tel +39 375 6326397
info.valvasone@gmail.com



HOTEL GELINDO DEI MAGREDI

HOTEL * * *

Via Roma, 14
33099 Vivaro (PN)

Tel +39 0427 97037
info@gelindo.it
www.gelindo.it

THE FACILITY

Gelindo dei Magredi is an organized and peaceful rural tourist centre settled in the green of the countryside of Vivaro, north of Pordenone. The hotel is in a complex that includes 30 rooms, a camping site, restaurant and swimming pool.

It is on a farm of 20 hectares with farm animals, vegetables and organic fruit orchards, vineyards, cellars, a small museum of farming life and stables.

The comfortable rooms, the cosy restaurants, the large farm spaces with organic productions and the wellness area make it an ideal Country Resort for a short or long holiday in the name of "good living".



ACCESSIBILITY INFORMATION

The hotel has several private outdoor parking areas, with stalls reserved for people with disabilities. To enter the reception area, restaurant and breakfast room there is an inclined ramp of 5 m with a slope of about 10%; the interior paths are obstacle-free and the building is equipped with bathroom with front and side approach to the toilet (with handrails on both sides) and front approach to the washbasin.

There are three accessible bedrooms located in other buildings, at one hundred metres from the entrance and connected by pedestrian paths, with nearby parking stalls. The bedrooms are large and equipped with bathrooms that give front approach to the washbasin and use of the level-floor shower, with fully opening cubicle or shower curtain; in one room there is space for the front and side approach to the toilet (with a fixed handrail on the side of the wall), in the others only front approach (with folding handrail).

The large external areas intended for riding or farming have wide gravel paths; there is an inground swimming pool (not equipped with a lift or other means to facilitate people with mobility disabilities to enter the water) and children's play area with concrete self-locking slabs.

LOKANDA DEVETAK 1870

HOTEL - RESTAURANT

Via Brezici, 22
fraz. San Michele del Carso
34070 Savogna d'Isonzo (GO)

Tel +39 0481 882488
Fax +39 0481 882964
info@devetak.com
www.devetak.com

THE FACILITY

A restaurant with a traditional karst cuisine, to which innovative elements have been added: a cellar carved in karst stone with **14,000 bottles**, **8 cosy rooms** in the karst style with all the comforts, an inn for a frugal meal and a good glass of wine - a farm, which grows fruits, vegetables, produces jams, syrups, pickled vegetables, cured meats, honey and much more. Typical products, tradition, love for the territory, research and imagination - the future looking to the past.

An inclination to hospitality handed down for more than a century - precisely since 1870, the same family for 5 generations: Devetak.



ACCESSIBILITY INFORMATION

The facility has an external private parking area, opposite the entrance with deep coarse gravel.

The main entrance to the facility has a step of 10 cm while the side one, a few metres away, has a ramp 50 cm long and with a slope of about 15%. The common spaces (breakfast room, restaurant) are accessible to all guests and are connected by obstacle-free paths.

The bedrooms are located in another building, behind the one used as an entrance/restaurant/breakfast room, which can be reached through an inner courtyard, passing a 4 m long ramp with a slope of about 14%.

The two accessible bedrooms have a small wooden landing which is higher than the surrounding floor and is connected by a short inclined ramp; the rooms are large and equipped with bathrooms that allow front and side approach to the toilet (with a fixed handrail placed on the wall next to the toilet), front approach to the washbasin and use of the level-floor shower, with cubicle which opens completely.

HOTEL DUE LEONI

HOTEL * * * *

Piazza del Popolo, 24
33077 Sacile (PN)

Tel +39 0434 788111
Fax +39 0434 788112
info@hoteldueleoni.com
www.hoteldueleoni.com

THE FACILITY

The Hotel Due Leoni, located in a context rich in history and suggestive surroundings, guarantees its guests the maximum comfort in a discreet and elegant environment.

Its location and the services it offers, make it an ideal place for those who want a holiday in the name of relaxation and for cyclists who travel the Cycle path of the foothills and the Collio.



ACCESSIBILITY INFORMATION

The hotel has a garage located on the basement, connected with the entrance of the hotel by a lift. The entrance to the facility is accessible from the outdoor pedestrian area.

The common spaces (breakfast room, bar meeting/conference rooms) can be used by all the guests and are connected by obstacle-free paths. The facility develops over several levels connected by lift (door 80 cm wide, cabin 103x137 cm).

The four accessible double bedrooms are large and have bathrooms which give front approach to the toilet (with a folding handrail on one side of the toilet), front approach to the washbasin and use of a level-floor shower with shower curtain.

HOTEL PATRIARCA

HOTEL * * *

Via Pascatti, 6
33078 San Vito al Tagliamento (PN)

Tel +39 0434 875555
Fax +39 0434 875353
www.hotelpatriarca.it
info@hotelpatriarca.it

THE FACILITY

The Patriarca hotel is a modern and comfortable facility, the ideal place for business meetings and families in search of relaxation in the heart of Friuli Venezia Giulia. The hotel has 27 multi-purpose rooms and a lovely Suite, tastefully furnished with every comfort. Every area of the hotel has an internet connection and high-speed Wi-Fi.

THE RESTAURANT

La Piramide is the flagship of the structure. Its careful and refined cuisine offers delicious dishes typical of Friuli and Puglia.



ACCESSIBILITY INFORMATION

A few dozen metres from the entrance there is an outdoor public parking area, with stalls reserved for people with disabilities, with flat paths leading to the hotel.

The entrance to the property is accessible from the outdoor pedestrian area, with a threshold of 1 cm in front of the door; the common spaces (breakfast room and restaurant) are accessible to all guests and are connected by obstacle-free paths. The facility develops over several levels connected by lift (door 90 cm wide, cabin 135x150 cm).

The two accessible bedrooms are single and have a bathroom that gives side approach to the toilet front approach to the washbasin and use of the level-floor shower with shower curtain; there are handrails all around the bathroom.



FOOD AND WINE





A TERRITORY TO BE TASTED!

Friuli Venezia Giulia's food and wine scene boasts some of the most unique products in the world. Visitors are just spoilt for choice. Among savoury and sweet dishes, wine, beer and grappa it is an unforgettable experience for the senses.

Friuli Venezia Giulia is a garden of delights for those who love good food. Tastes to be discovered not only in food but also in the glass.

The regional territory, in fact, is a huge vineyard sitting between the mountains and the sea, a paradise where every year some of the best white wines in the world are produced. A territory of twenty-thousand hectares, cultivated with love by 1.500 companies that produce eighty million quality bottles every year.

This exciting journey in taste can take the most different routes, depending on the season, the climate, the desires and the curiosity of each person. It will be nice to be surprised by the special places and welcome on a journey from which you will not want to go back home.





ROUTE OF WINE AND FLAVOURS

Six experiences to get to know the territory, the producers and the productions.

A world of sensations, human faces, flavours and ancient knowledge that opens up in a set of roads that intersect without borders from the Riviera to the Friuli Dolomites, from the Collio to the great Tagliamento river, from the Magredi to the Karst and to the rolling hills around San Daniele and Udine.

Precious itineraries all to be discovered that on the trail of taste and excellent wines will take you from Pordenone to Gorizia, from the Alps to the Isonzo, from Trieste to Aquileia, from the Adriatic to Cividale to get to know the people who produce and make the products, dishes and wines of Friuli Venezia Giulia unique.

Discover the accessible proposals of the Route of Wine and Flavours in Friuli Venezia Giulia (Strada del Vino e dei Sapori del Friuli Venezia Giulia) on the website www.turismofvg.it in the dedicated section.

Scopri le proposte accessibili della Strada del Vino e dei Sapori del Friuli Venezia Giulia sul sito www.turismofvg.it nella sezione dedicata.



FOOD AND WINE

OUTDOOR FOOD PROJECT

To improve the daily life of people suffering from celiac disease, the AIC (Italian Celiac Association) has undertaken a specific project dedicated to catering: AIC Outdoor Food Project Without Gluten.

AIC arises from the need to create a chain of informed practices concerning celiac disease that can offer a service suitable for the dietary needs of celiacs. All the companies that join the AIC project are trained through courses and theoretical/practical meetings on celiac disease and gluten-free cooking.

From the project “Outdoor Food” the eponymous guide has been created and also a section on the AIC website where you can find all the accredited companies.

www.celiachia.it/DIETA/ricercaStrutture.php





FVG card

Your pass to experience Friuli Venezia Giulia



Trieste Infopoint

Piazza Unità d'Italia, 4B
34121 Trieste
Tel. +39 040 3478312
info.trieste@promoturismo.fvg.it

Udine Infopoint

Piazza I° Maggio, 7
33100 Udine
Tel. +39 0432 295972
info.udine@promoturismo.fvg.it

Gorizia Infopoint

Corso Italia, 9
34170 Gorizia
Tel. +39 0481 535764
info.gorizia@promoturismo.fvg.it

Pordenone Infopoint

Palazzo Badini
Via Mazzini, 2
33170 Pordenone
Tel. +39 0434 520381
info.pordenone@promoturismo.fvg.it

Aeroporto FVG Infopoint

Via Aquileia, 46
34077 Ronchi dei Legionari (GO)
Tel. +39 0481 476079
info.aeroporto.fvg@promoturismo.fvg.it

Lignano Sabbiadoro Infopoint

Via Latisana, 42
33054 Lignano Sabbiadoro (UD)
Tel. +39 0431 71821
info.lignano@promoturismo.fvg.it

Lignano Pineta Infopoint

(summer season)
Via dei Pini, 53
33054 Lignano Pineta (UD)
Tel. +39 0431 422169
info.lignanopineta@promoturismo.fvg.it

Grado Infopoint

Viale D. Alighieri, 66
34073 Grado (GO)
Tel. +39 0431 877111
info.grado@promoturismo.fvg.it

Sistiana Infopoint (summer season)

Sistiana 56/B
34011 Duino - Aurisina
Tel. +39 040 299166
info.sistiana@promoturismo.fvg.it

Miramare Infopoint

Porta della Bora
34121 Trieste
Tel. +39 333 6121377
info.miramare@promoturismo.fvg.it

Palmanova Infopoint

Borgo Udine, 4
33057 Palmanova (UD)
Tel. +39 0432 924815
info.palmanova@promoturismo.fvg.it

Aquileia Infopoint

Via Giulia Augusta, 11
33051 Aquileia (UD)
Tel. +39 0431 919491
info.aquileia@promoturismo.fvg.it

Piancavallo Infopoint

(summer and winter season)
Via Collalto, 1
33081 Piancavallo - Aviano (PN)
Tel. +39 0434 655191
info.piancavallo@promoturismo.fvg.it

Forni di Sopra Infopoint

Via Cadore, 1
33024 Forni di Sopra (UD)
Tel. +39 0433 886767
info.fornidisopra@promoturismo.fvg.it

Sappada Infopoint

Borgata Bach, 9
33012 Sappada (UD)
Tel. +39 0435 469131
info.sappada@promoturismo.fvg.it

Tolmezzo Infopoint

Via della Vittoria, 4
33028 Tolmezzo (UD)
Tel. +39 0433 44898
info.tolmezzo@promoturismo.fvg.it

Arta Terme Infopoint

Via Nazionale, 1
33022 Arta Terme (UD)
Tel. +39 0433 929290
info.artaterme@promoturismo.fvg.it

Tarvisio Infopoint

Via Roma, 14
33018 Tarvisio (UD)
Tel. +39 0428 2135
info.tarvisio@promoturismo.fvg.it

The openings of the Infopoints may vary, always consult the site www.turismo.fvg.it

CREDIT

A. Cop	Archivio Hotel Italia Palace	E. Gusso
A. Fogar	Archivio Hotel Miramare	E. Rustici
Archivio AD Borgo Soandri	Archivio Hotel Patriarca	F. Codogno
Archivio AD Le Marmote	Archivio Hotel President	F. Gallina
Archivio AD Zoncolan	Archivio Hotel Spartiacque	F. Parenzan
Archivio Az Agricola Fior Rosso	Archivio Immaginario Scientifico	G. Baronchelli
Archivio Bioma	Archivio Istituto Rittmeyer	G. Vicario
Archivio Casa delle Farfalle	Archivio MAN	L. Esposito
Archivio castello di Susans	Archivio MUCA	L. Gaudenzio
Archivio Castello di Villalta	Archivio Museo Archeologico di Udine	L. Gherstinich
Archivio Comune di Sesto	Archivio Museo Naturale Trieste	L. Petrussi
Archivio Comune di Valvasone	Archivio Ostruska	M. Crivellari
Archivio Devetak	Archivio Parco Zoo	M. Di Lenardo
Archivio Gelindo dei Magredi	Archivio Porto San Rocco	M. Milano
Archivio Grand Hotel Astoria	Archivio Riserva Doberdò	M. Valdemarin
Archivio Hotel 1301 INN	Archivio Villa Attems	M. Verin
Archivio Hotel 2 Leoni	Archivio Villa Cigolotti	N. Silvia
Archivio Hotel Al Posta	Archivio Villa Iachia	P. Abbate
Archivio Hotel Fonzari	Archivio Villa Manin Guerresco	R. Mansutti
Archivio Hotel Gortani	Archivo Camping Mare Pineta	S. e E. Ciol
Archivio Hotel Il Cervo	C. Beltrame	U. Da Pozzo
Archivio Hotel Italia	Ciol	



Highly legible font





HOW TO GET THERE

BY CAR

Motorways:

A4 Torino/Trieste
A23 Palmanova/Udine/Tarvisio
A28 Portogruaro/Conegliano
A27 Trieste/Belluno

BY PLANE

Airport of Trieste
40 km from Trieste and Udine
80 km from Pordenone
130 km from Venezia
120 km from Lubiana
www.triesteairport.it

BY TRAIN

www.trenitalia.it
www.italotreno.it

Numero Verde
800-016-044

Info
+39 0431 387130

Gruppo PromoTurismoFVG
Cervignano del Friuli - Udine - Trieste
Villa Chiozza - via Carso, 3
33052 Cervignano del Friuli (UD)
info@promoturismo.fvg.it

   
#FVGlive

FRIULI VENEZIA GIULIA
www.turismo.fvg.it